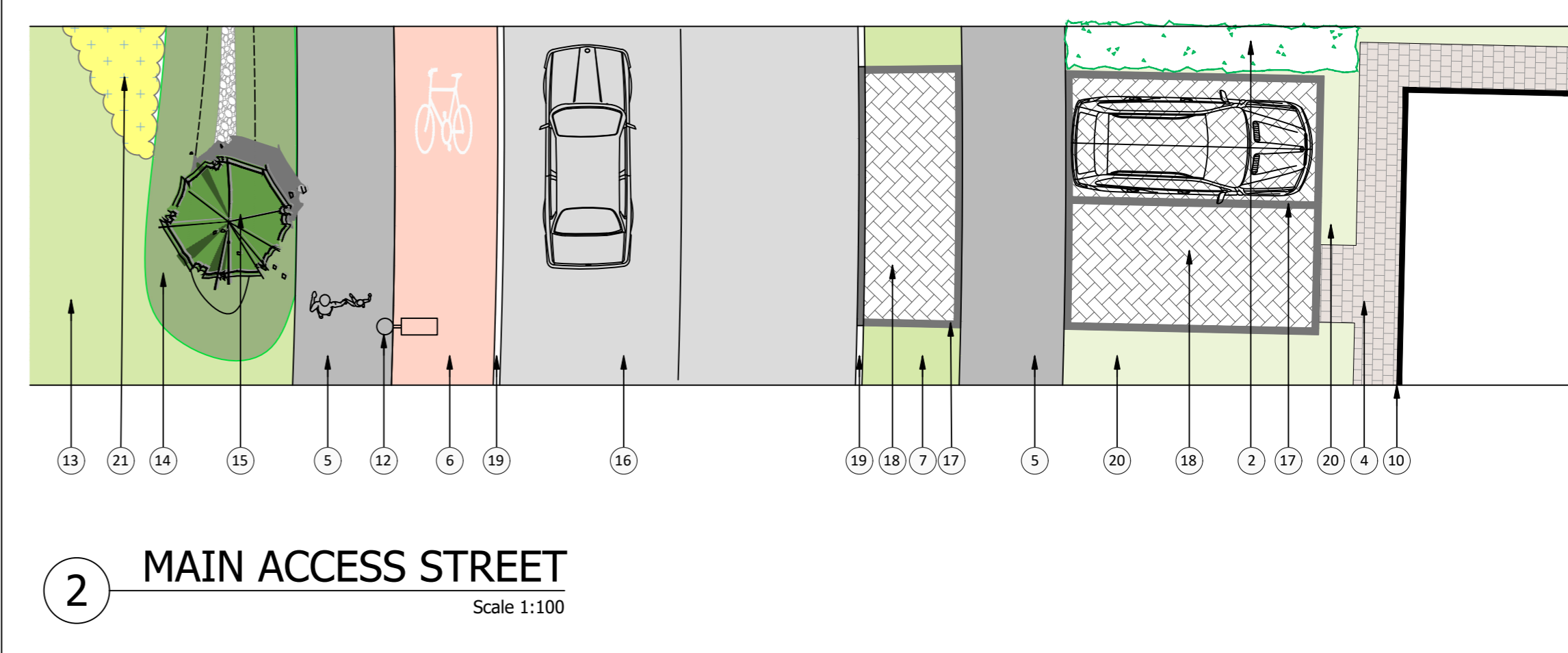
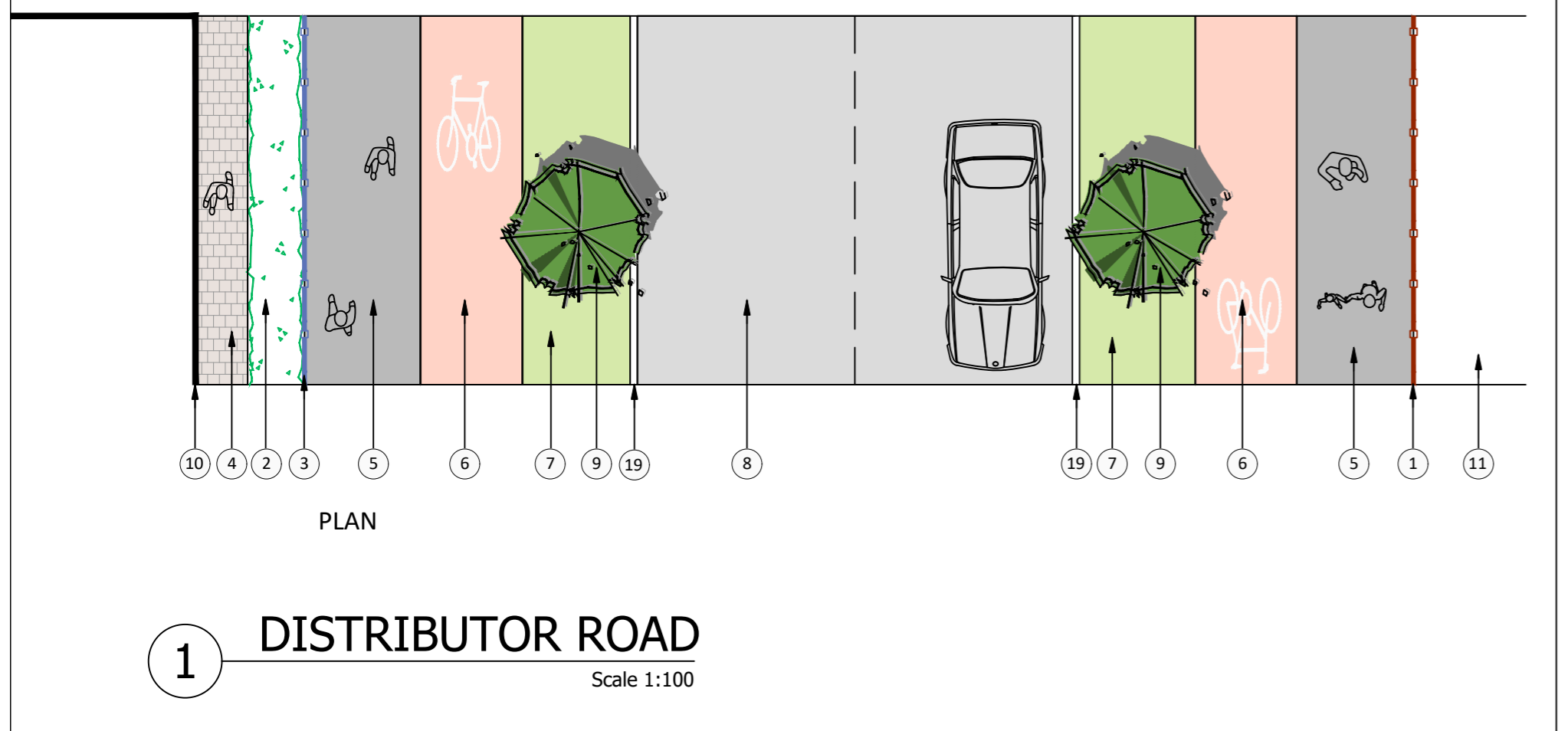
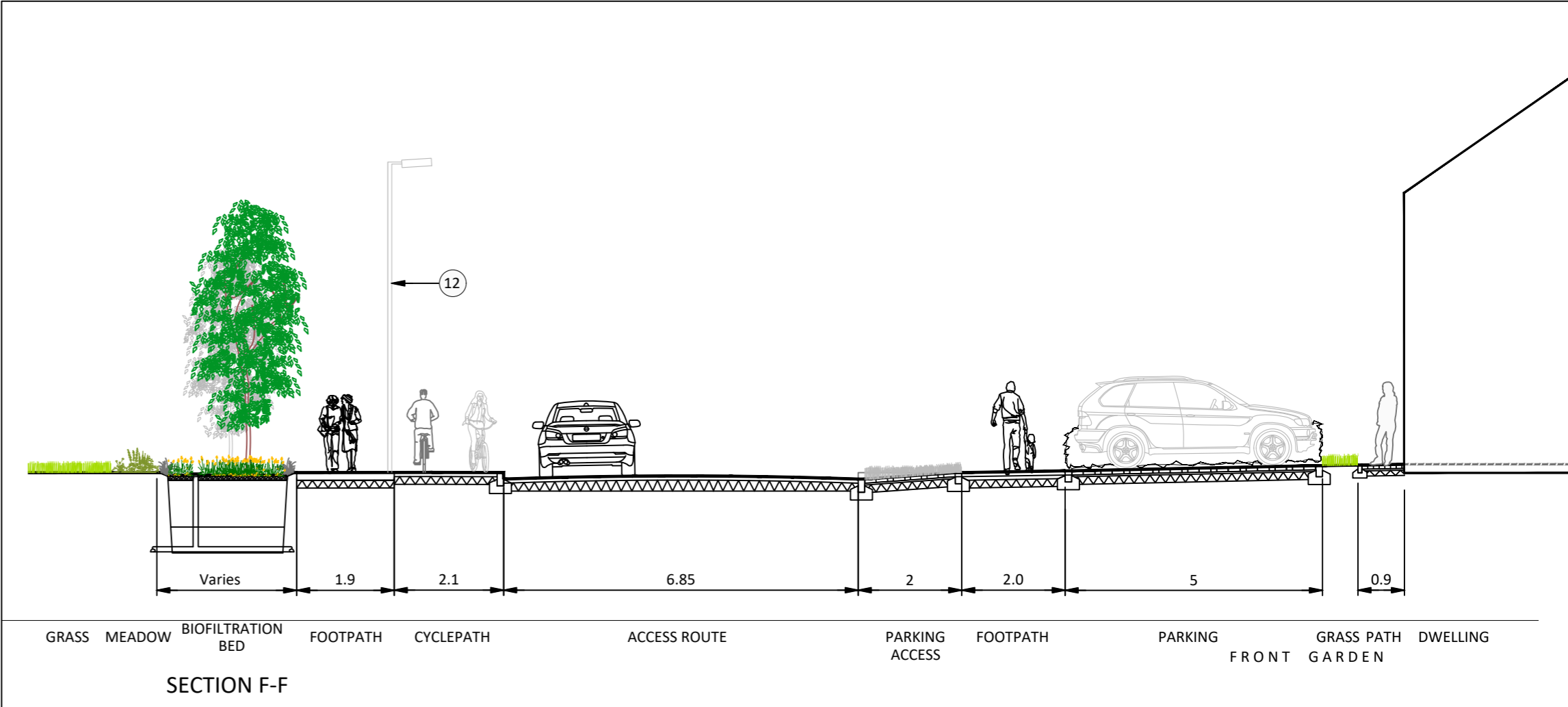
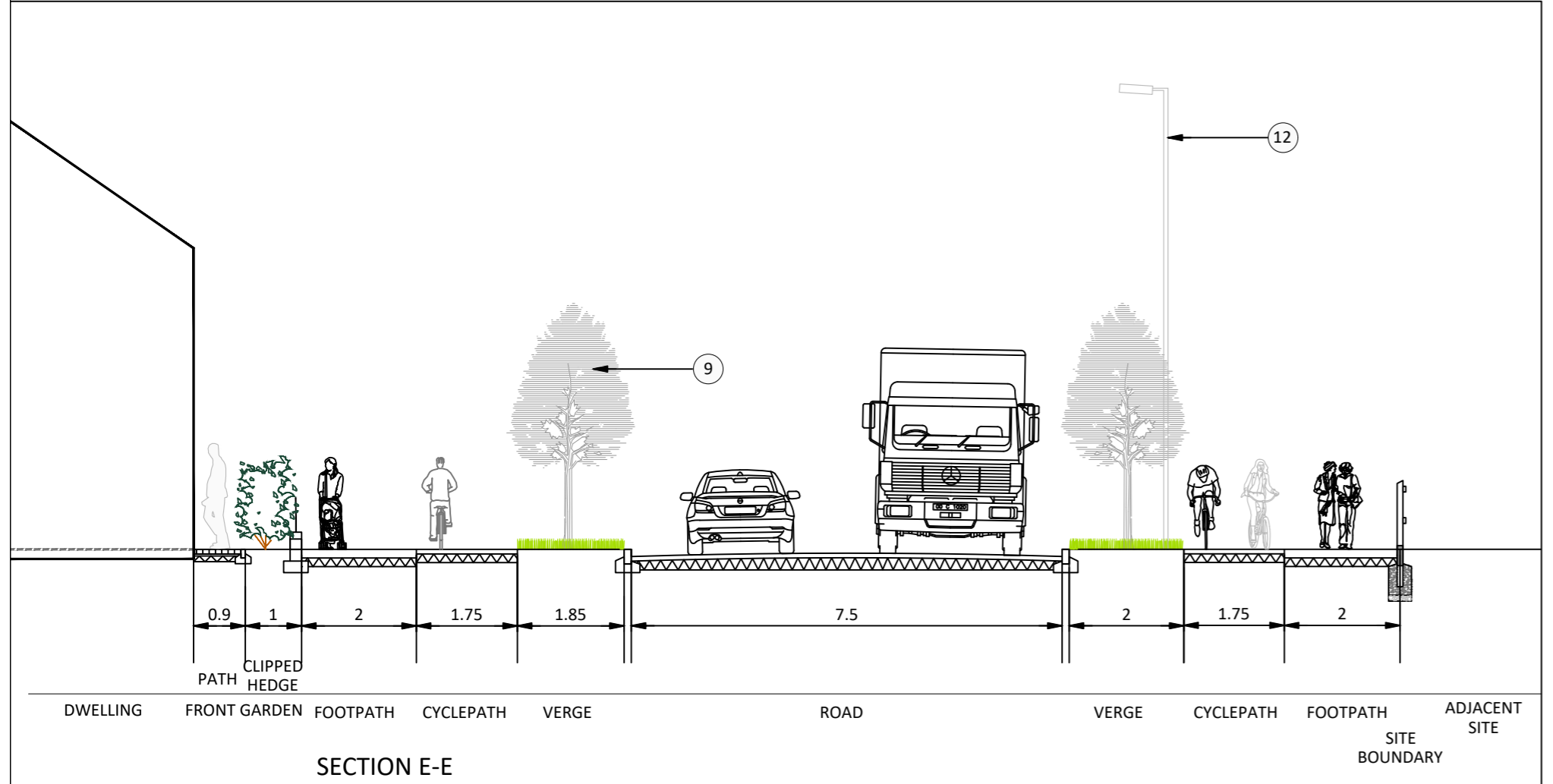
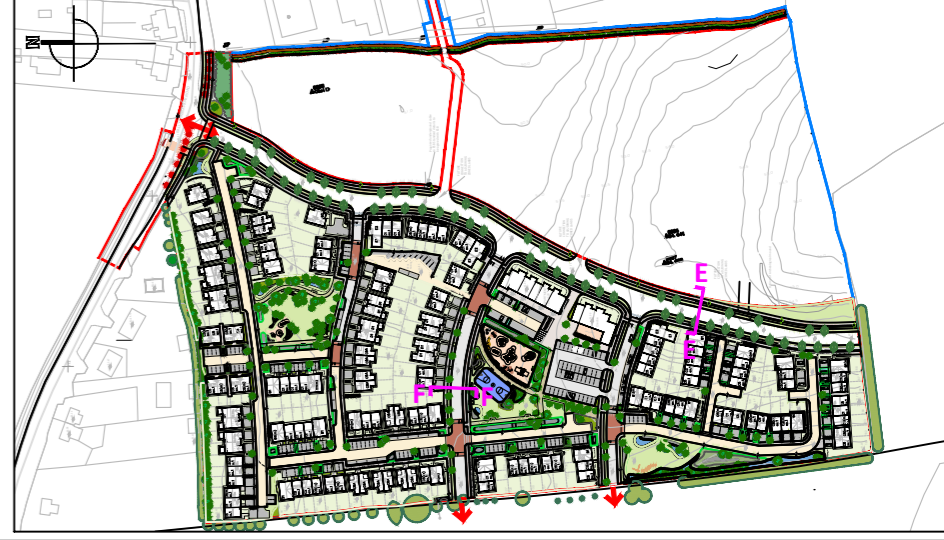


**HARDSCAPE LEGEND:**

- 1. TIMBER POST AND RAIL FENCE, 1.2M HIGH, WATER BASED BLACK STAINED FINISH.
- 2. CLIPPED HEDGE
- 3. RAILING, PAINTED BLACK, SET ON LOW WALL TO ARCHITECT'S DETAIL AS DEFINING EDGE TO PRIVATE FRONT GARDENS OF PROPERTIES AT SELECT CORNER AND JUNCTION LOCATIONS.
- 4. PRIVATE FOOTPATH - SELECT CONCRETE BLOCK PAVING 80MM DEEP, E.G. 'TOBERMORE SHANNON DUO, SLATE COLOUR OR EQUIVALENT
- 5. PUBLIC FOOTPATH - BRUSHED CONCRETE TO ENGINEER'S DETAILS
- 6. CYCLEPATH - TO ENGINEER'S DETAILS
- 7. AMENITY GRASS VERGE
- 8. DISTRIBUTOR ROAD - CARRIAGEWAY TO ENGINEER'S DETAILS
- 9. STREET TREE PLANTING
- 10. DWELLING TO ARCHITECT'S DETAILS
- 11. ADJACENT SITE
- 12. LIGHTING TO ENGINEER'S DETAILS
- 13. AMENITY GRASS IN OPEN SPACE
- 14. BIOSWALE PLANTING
- 15. TREE PLANTING AT OPEN SPACE EDGE TO STREET
- 16. ACCESS STREET CARRIAGEWAY TO ENGINEER'S DETAILS
- 17. PARKING SPACES BANDING - SELECT, NATURAL COLOURED EXPOSED AGGREGATE KERB 125X915X255 LAID FLUSH, E.G. 'TOBERMORE COUNTRY KERB' OR EQUIVALENT
- 18. PARKING SPACES - SELECT CONCRETE BLOCK PAVING 80MM DEEP, E.G. 'TOBERMORE' HYDROPAVE COLOUR: CHARCOAL, OR EQUIVALENT
- 19. SELECT, NATURAL COLOURED EXPOSED AGGREGATE KERB 125X915X255 UPRIGHT, E.G. 'TOBERMORE COUNTRY KERB' OR EQUIVALENT
- 20. GRASS IN PRIVATE GARDENS
- 21. WILDFLOWER MEADOW PLANTING

**KEY  
NTS**



Rev	Date	Drawn	Checked	Description
01	20/05/2024	AK	GD	Issue for LRD Planning
00	15/03/2022	GD	DB	Issue for Planning

Notes

COPYRIGHT © ALL RIGHTS RESERVED.  
THIS WORK IS COPYRIGHT AND CANNOT BE REPRODUCED OR COPIED IN ANY FORM WITHOUT THE WRITTEN PERMISSION OF THE ORIGINATOR.  
DO NOT SCALE FROM THIS DRAWING. WORK ONLY FROM FIGURED DIMENSIONS.  
THIS DRAWING TO BE READ IN CONJUNCTION WITH RELEVANT CONSULTANT'S DRAWINGS.

Ordnance Survey Ireland Licence No AR 0001322  
© Ordnance Survey Ireland/Government of Ireland

File Ref: Y:\6835\_LITTLE\_ISLAND\_SHD\6835\_WORKING\6835\_CAD\6835\_300\_Planning\6835\_Updated\_2022\_LRD\6835\_LRD\6835-304-308\_DETAILS\_LRD\_20230704  
Modified By: Agata Kostecka Modified Time: 5/24/2024 12:21:41 pm  
Plot Time: 5/24/2024 12:30:29 pm

Project <b>COURTSTOWN, LITTLE ISLAND, CORK</b>		Project No. <b>6835</b>
Drg. <b>TYPICAL ROUTE SECTIONS</b>	Drawing No. <b>308</b>	Rev. <b>308</b>
Scales <b>1:100 @ A2</b>	Status <b>PLANNING</b>	Date <b>20/05/24</b>
Penrose Wharf Business Centre, Penrose Wharf, Cork Tel: +353(0) 21 242 5620		Drn. <b>GD</b>
mail@bradyshipmanmartin.com www.bradyshipmanmartin.com		Chd. <b>GD</b>
		Passed <b>DB</b>

