

TYP. PC KERB DETAIL TO NRA SPECIFICATION

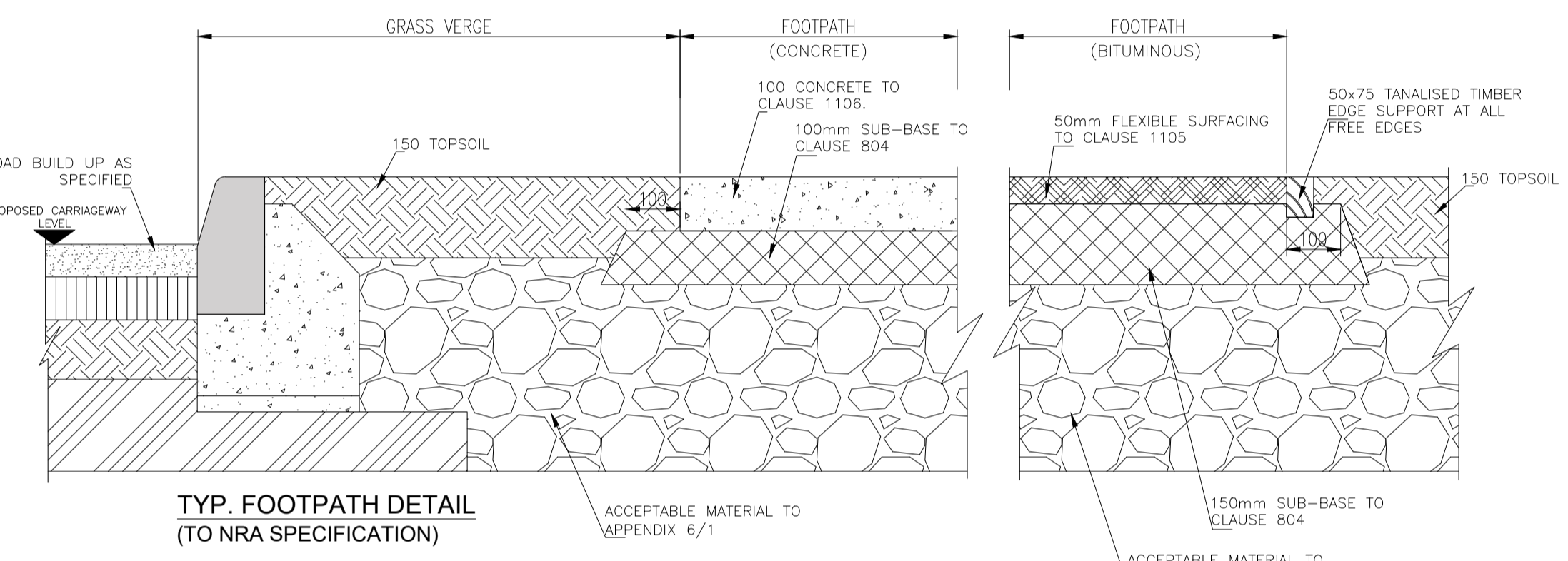
PC KERB NOTES:

DROPPED KERB DETAIL TO NRA SPECIFICATION

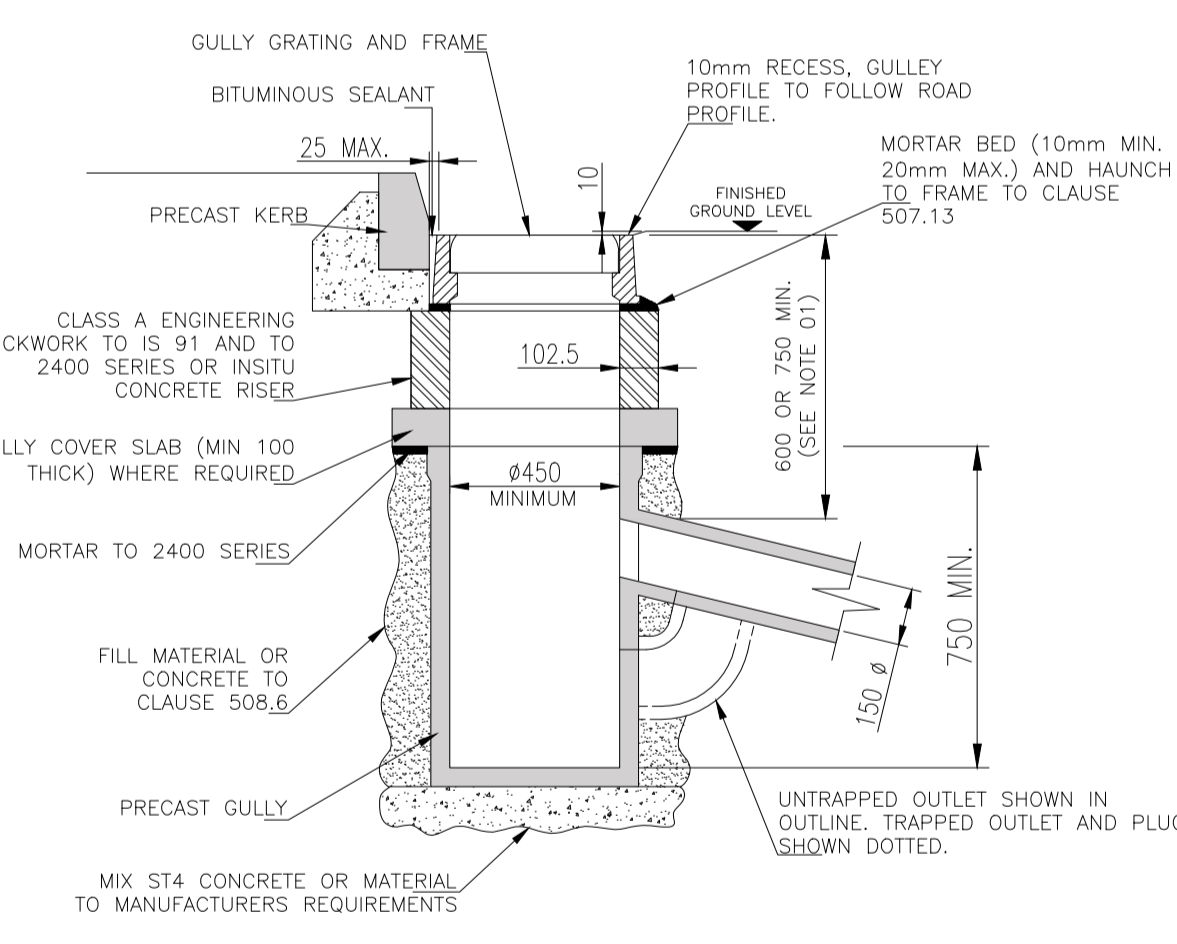
01. PRECAST KERBS SHALL BE LAID & LEVELLED IN ACCORDANCE WITH BS 7533:PART 4.
02. AT VEHICULAR ACCESS POINTS, CONCRETE TO BE REINFORCED WITH A393 MESH-TOP & BOTTOM.
03. ALL CONCRETE EDGES & JOINTS SHALL BE BULLNOZED WITH A TROWEL.

WATERMAIN PIPE		
DIAMETER (mm)	'A' (mm)	'B' (mm)
<300	300	300
300 - 450	500	500
>450	3000	800

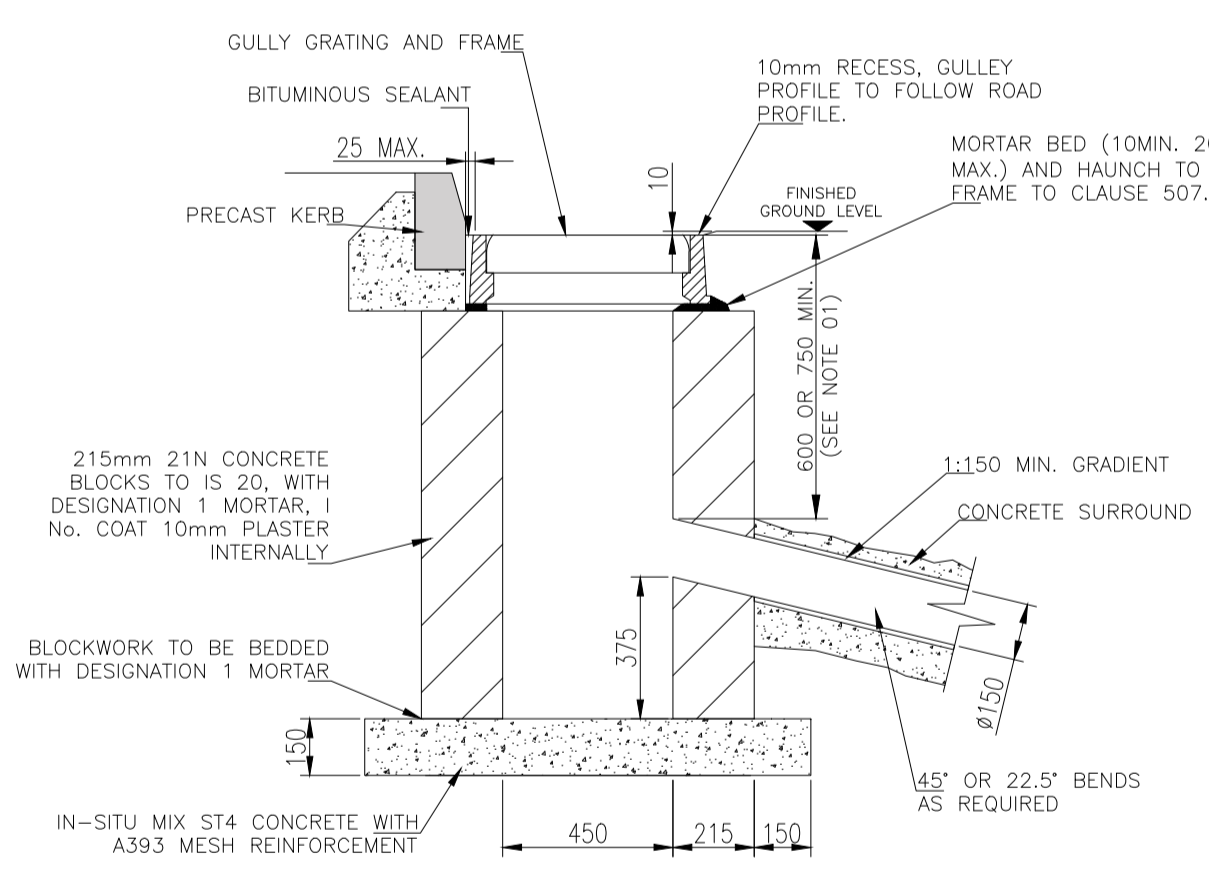
WATER PIPE	
DIAMETER (mm)	'C' (mm)
≤150	3000
200 - 600	5000
>600	8000



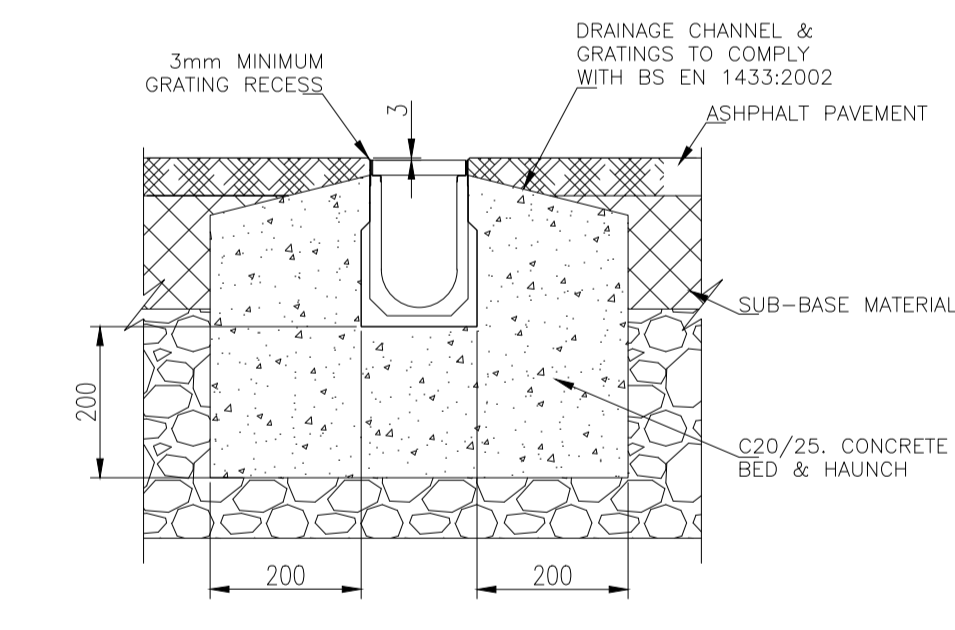
TYP. FOOTPATH DETAIL (TO NRA SPECIFICATION)



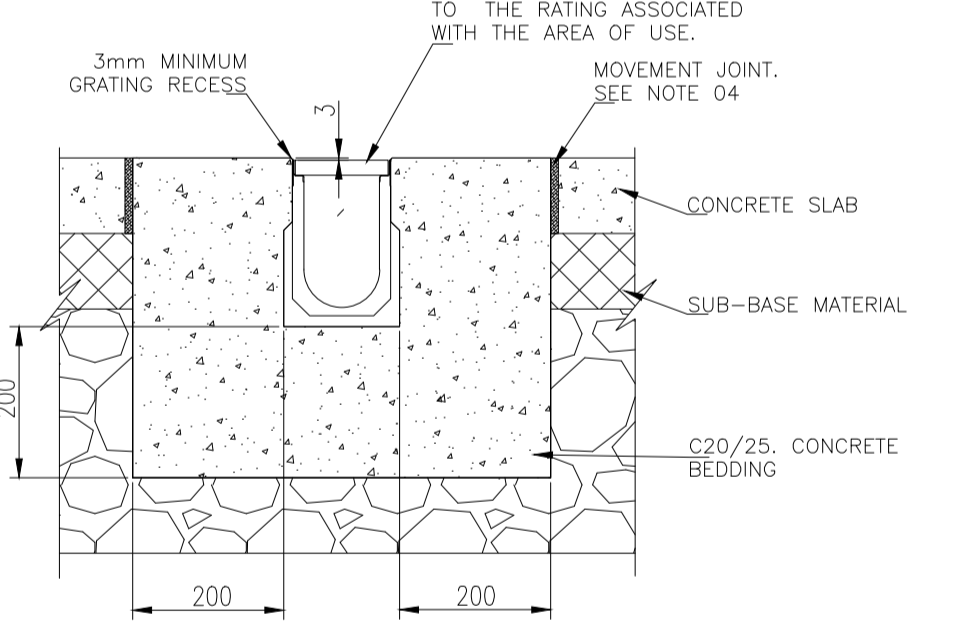
PRECAST GULLY (TO NRA SPECIFICATION)



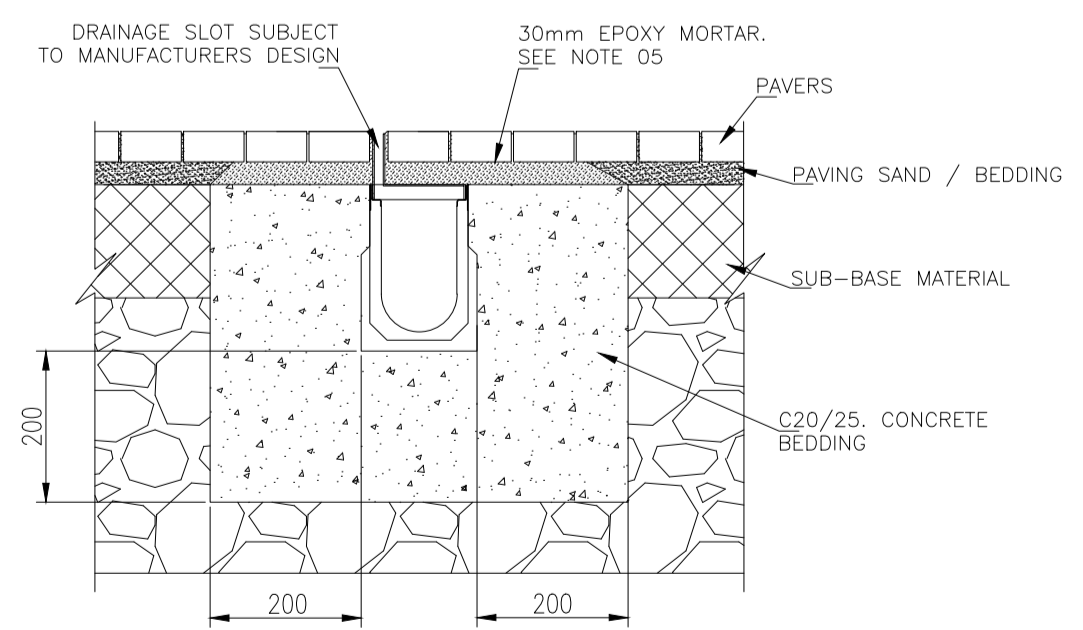
IN-SITU BLOCKWORK GULLY SECTION



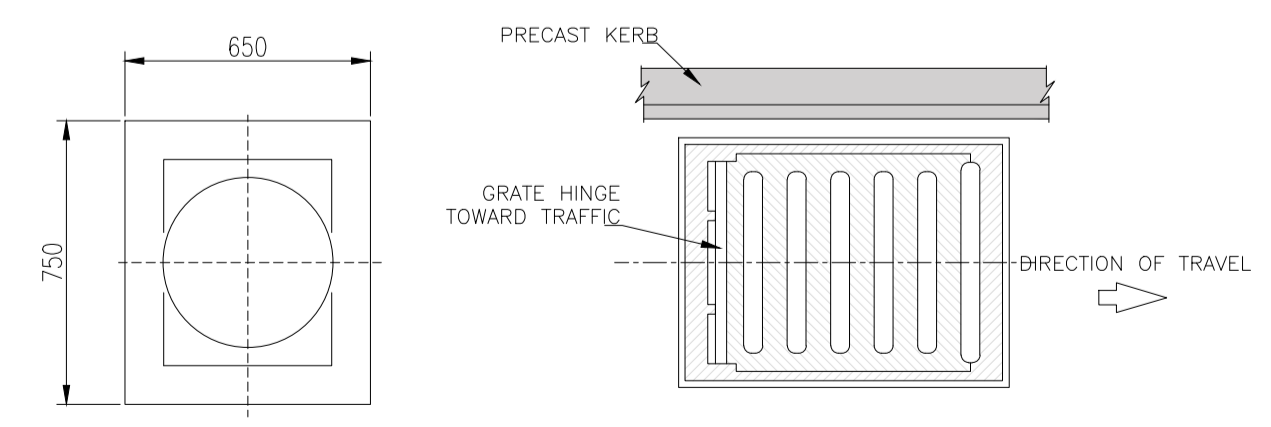
CHANNEL DRAIN ASPHALT PAVEMENT



CHANNEL DRAIN CONCRETE PAVEMENT



CHANNEL DRAIN BRICK PAVEMENT



GULLY COVER SLAB PRECAST CONCRETE PLAN VIEW

GULLY COVER GRATE DUCTILE IRON PLAN VIEW

- GULLY NOTES:**
01. MINIMUM DEPTH FROM THE TOP OF THE GRATING TO THE TOP OF THE GULLY OUTLET IS TO BE 750mm WHEN THE CONNECTING PIPE IS UNDER A CARRIAGEWAY OR HARD SHOULDER, AND 600mm ELSEWHERE
 02. GULLY GRATING TO COMPLY WITH IS EN 124.
 03. GULLY GRATING TO BE PROVIDED WITH A LOCKING DEVICE IN ACCORDANCE WITH CLAUSE 508.4
 04. PRECAST CONCRETE GULLYS & GULLY SLABS SHALL COMPLY WITH BS 5911-4 & IS EN 1917

- 06. DETAILED PROPOSALS, INCLUDING WORK METHOD STATEMENTS, INSURANCE CONFIRMATION AND DETAILS OF WORK COMPLETED OF A SIMILAR NATURE MUST BE SUBMITTED TO IRISH WATER FOR ITS CONSIDERATION BEFORE APPROVAL WILL ISSUE. ALL SUCH WORKS IN THE VICINITY OF ARTERIAL WATER MAINS AND SEWER (MAINS GREATER THAN 400mm) SHALL BE SUBJECT TO WRITTEN AGREEMENT WITH IRISH WATER BEFORE CONSTRUCTION COMMENCES ON SITE. THIS AGREEMENT SHALL ALSO INCLUDE ANY NECESSARY PROTECTION FOR WATER MAINS.**
- 07. WATERMANS OF ANY SIZE SHALL NOT BE WITHIN 1m OF THE BOUNDARY TO A PREMISES.**
- 08. WHERE THE DESIGN DEVIATES FROM THIS STANDARD DETAIL, THE DESIGN SHALL BE SUBJECT TO THE APPROVAL OF IRISH WATER.**
- 09. THE MINIMUM CLEAR DISTANCE WILL BE INCREASED IF THE SEWER IS GREATER THAN 3m DEEP OR IF THE DIAMETER IS GREATER THAN 375mm. THE MINIMUM CLEAR DISTANCE IN THESE SITUATIONS SHALL BE > DEPTH TO INVERT OR 10 TIMES THE SEWER DIAMETER, WHICH EVER IS GREATER.**
- 10. THE EXTERNAL FACES OF MANHOLE SHALL BE AT LEAST 0.5m FROM KERB LINE.**
- CHANNEL DRAIN NOTES:**
- 01. SPECIFIC SITE CONDITIONS MAY REQUIRE AN INCREASE IN THE DIMENSIONS OR REINFORCEMENT SHOWN. IT IS THE CLIENTS RESPONSIBILITY TO ENSURE THE CONCRETE ENCASEMENT IS DESIGNED FOR THE APPLICATION.**
- 02. A MINIMUM CONCRETE STRENGTH OF 25 MPa IS RECOMMENDED. THE CONCRETE SHOULD BE VIBRATED TO ELIMINATE AIR POCKETS.**
- 03. THE FINISHED LEVEL OF THE CONCRETE, ASPHALT OR BRICK PAVERS MUST BE APPROX. 3mm ABOVE THE TOP OF THE CHANNEL EDGE.**
- 04. EXPANSION & CRACK CONTROL JOINTS ARE RECOMMENDED TO PROTECT THE CHANNEL & CONCRETE SURROUND.**
- 05. FOR BRICK PAVERS, THE PAVER COURSE ADJACENT TO THE CHANNEL EDGE MUST BE FULLY BONDED TO THE CONCRETE SURROUND.**
- FOR BRICKSLOT DRAINS, THE PAVER COURSE ADJACENT TO THE CHANNEL EDGE MUST BE FULLY BONDED TO BRICKSLOT & CONCRETE SURROUND USING AN EPOXY OR POLYMER MODIFIED MORTAR.**
- 06. FOR ASPHALT SURFACES, THE HAUNCH MUST SLOPE AWAY AT A RATIO OF 1:4 OR 1:5' APPROX.**
- 07. REFER TO AGO OR SIMILAR APPROVED SUPPLIERS LATEST INSTALLATION INSTRUCTIONS FOR COMPLETE DETAILS.**

- NOTES:**
- 01. THE SEPARATION DISTANCES OUTLINED ARE MINIMUM REQUIREMENTS.**
- 02. WATERMAIN (PROPOSED) SEPARATION DISTANCES**
- HORIZONTAL**
300mm TO DISTRIBUTION MAINS OF LESS THAN 300mm DIAMETER.
500mm TO TRUNK MAINS BETWEEN 300mm AND 450mm DIAMETER.
3m TO ARTERIAL WATER MAINS OF GREATER THAN 450mm DIAMETER.
- VERTICAL**
300mm TO DISTRIBUTION MAINS OF LESS THAN 300mm DIAMETER.
500mm TO TRUNK/ARTERIAL MAINS OF DIAMETER GREATER THAN 300mm.
- ANY PROPOSED PIPE CROSSING SHOULD BE LOCATED MID-WAY BETWEEN THE WATER JOINTS WITH MINIMUM CLEAR DISTANCE OF 300mm AND UP TO 500mm. ALL CROSSINGS SHOULD BE AT LEAST 500mm AWAY FROM FITTINGS OR JOINTS.**
- 03. WATERMAIN (EXISTING) SEPARATION DISTANCES**
- HORIZONTAL**
500mm AT EITHER SIDE OF MAINS UP TO AND INCLUDING 200mm IN DIAMETER.
1m AT EITHER SIDE OF MAINS OF 225mm TO 250mm DIAMETER.
2m AT EITHER SIDE OF MAINS OF 300mm TO 375mm IN DIAMETER.
5m AT EITHER SIDE OF MAINS OF 400mm AND 450mm IN DIAMETER.
SPECIFIC IRISH WATER ADVISED DISTANCES FOR MAINS IN EXCESS OF 475mm DIAMETER.
- 04. SPECIFIC SEPARATION CLEARANCE DISTANCES IN EXCESS OF THESE MINIMA SHALL BE PROVIDED FOR SERVICES SUCH AS GAS, ELECTRICITY, FIBRE-OPTIC OR OIL FILLED CABLES AS THE CASE MAY BE. THE PARTICULAR UTILITY PROVIDERS SHALL BE CONSULTED TO DETERMINE THESE MINIMUM SEPARATION DISTANCES AND EVIDENCE OF THIS CONSULTATION, WITH THE SPECIFIED SEPARATION DISTANCES, SHALL BE PROVIDED TO IRISH WATER AT DESIGN STAGE.**
- 05. NOTIFICATION IN WRITING IS REQUIRED SHOULD WORKS BE WITHIN THE FOLLOWING DISTANCES FROM AN EXISTING WATER MAIN OR WASTEWATER RISING MAIN:**
- HORIZONTAL**
1000mm AT EITHER SIDE OF EXISTING MAINS LESS THAN OR EQUAL TO 200mm DIAMETER
2000mm AT EITHER SIDE OF EXISTING MAINS OF 250mm TO 350mm DIAMETER
5000mm AT EITHER SIDE OF EXISTING MAINS OF DIAMETER GREATER THAN 350mm DIAMETER
- WHERE DUCTS OR PIPES ARE TO BE LAID CLOSE TO AN EXISTING WATER MAIN OR SEWER IN THE OWNERSHIP OF IRISH WATER, NOTIFICATION IN WRITING SHALL BE PROVIDED A MINIMUM OF 10 DAYS AHEAD OF ADVANCEMENT OF THE WORK.**
- NOTIFICATION IN WRITING IS REQUIRED SHOULD WORKS BE WITHIN 1.5m DISTANCE OF A WASTEWATER SEWER.**
- REQUIREMENTS SHALL ALSO APPLY TO TRIAL HOLES OR SLIT TRENCHES TO LOCATE THE MAIN OR GAIN GROUND INFO DATA.**
- LARGER DIAMETERS >300mm DISTRIBUTION AND TRUNK MAINS, IRISH WATER MUST BE NOTIFIED AT LEAST 1 MONTH IN ADVANCE.**
- DEVELOPERS SHALL ALSO COMPLY WITH ANY NOTIFICATION REQUIREMENTS OF OTHER UTILITY PROVIDERS (ESB, GAS MAIN, TELECOMMUNICATION ETC).**

Rev	Sts	Description	Date
P01	S2	Issued for Planning	23.06.20
P02	S2	Issued for Planning	15.07.22
P03	S2	Issued for Planning	27.09.23
P04	S2	Issued for Planning	14.06.24

MMOS The Chapel, Blackrock House, Blackrock Road, Cork, T12 KRK7
 MURPHY MATSON O'SULLIVAN CONSULTING CIVIL & STRUCTURAL ENGINEERS Tel: 353 21 4317608

PROJECT
Proposed Development at Courtstown, Little Island, Co. Cork

CLIENT
Ruden Homes Ltd.

TITLE
Typical Kerb & Gully Details

DRAWN BY A.R. **CHECKED BY** P.M. **APPROVED BY** P.M.

SCALE NTS **PROJECT NUMBER** 20093

DOCUMENT REFERENCE	STATUS
20093-MMS-ZZ-DR-C-10019	S2
PROJECT-ORIGINATOR-ZONE-LEVEL-TYPE-DICIPLINE-NUMBER	P04