

Figured dimensions only are to be used. All dimensions to be checked on site. Differences between drawings and between drawings and specification or bills of quantities to be reported to Engenuiti Consulting Engineers  
 © The copyright of the drawings and designs contained therein remains vested in the Duplan Limited via Engenuiti Consulting Engineers



ELEVATION 11 | LOOKING NORTH - PART 1 OF 2



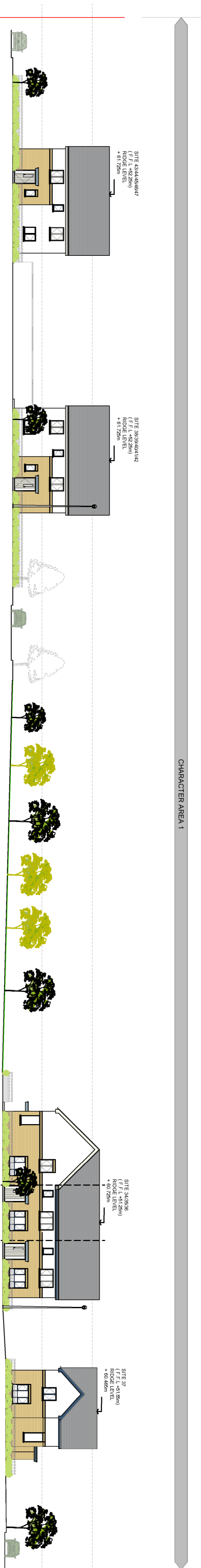
ELEVATION 11 | LOOKING NORTH - PART 2 OF 2



KEY PLAN

LEGEND : STREET ELEVATIONS / SITE SECTIONS

All levels are in meters. Please refer to general site layouts, engineering service drawings and reports for proposed road levels, site services & other engineering details & to Brady Shipman Martin submissions for site landscaping



ELEVATION 21 | LOOKING NORTH



ELEVATION 21 | LOOKING SOUTH

Rev.	Date	Amendment Details	Drawn	Chk'd	App'd
B	31.03.23	ISSUED FOR PLANNING	EOS	DOS	DOS
A	17.05.24	ISSUED FOR PLANNING	EOS	DOS	DOS



Address: Unit 1, Westfield Business Centre, Billingham, Co. Durham, UK  
 Telephone: 021 242 7257 Email: info@engenuiti.com Website: www.engenuiti.co.uk

Client: RUDEN HOMES LTD  
 Architecture: Urban Design  
 Planning: Planning

Project: RESIDENTIAL DEVELOPMENT  
 COURTYARD, LITTLE ISLAND  
 CO. COOK  
 Landscape: Landscape  
 Interiors: Interiors

Drawing Title: SITE STREET ELEVATIONS 1/3  
 GENERAL ARRANGEMENT

Scale @:	Drawn	Approved	Date:
1:250	EOS	DOS	01.03.22

Job No:	10277	Drawing No:	10277-PL-020	Rev:	B
---------	-------	-------------	--------------	------	---

Issue Status:  
 Information  Preliminary  Approval   
 Construction  Tender  Planning