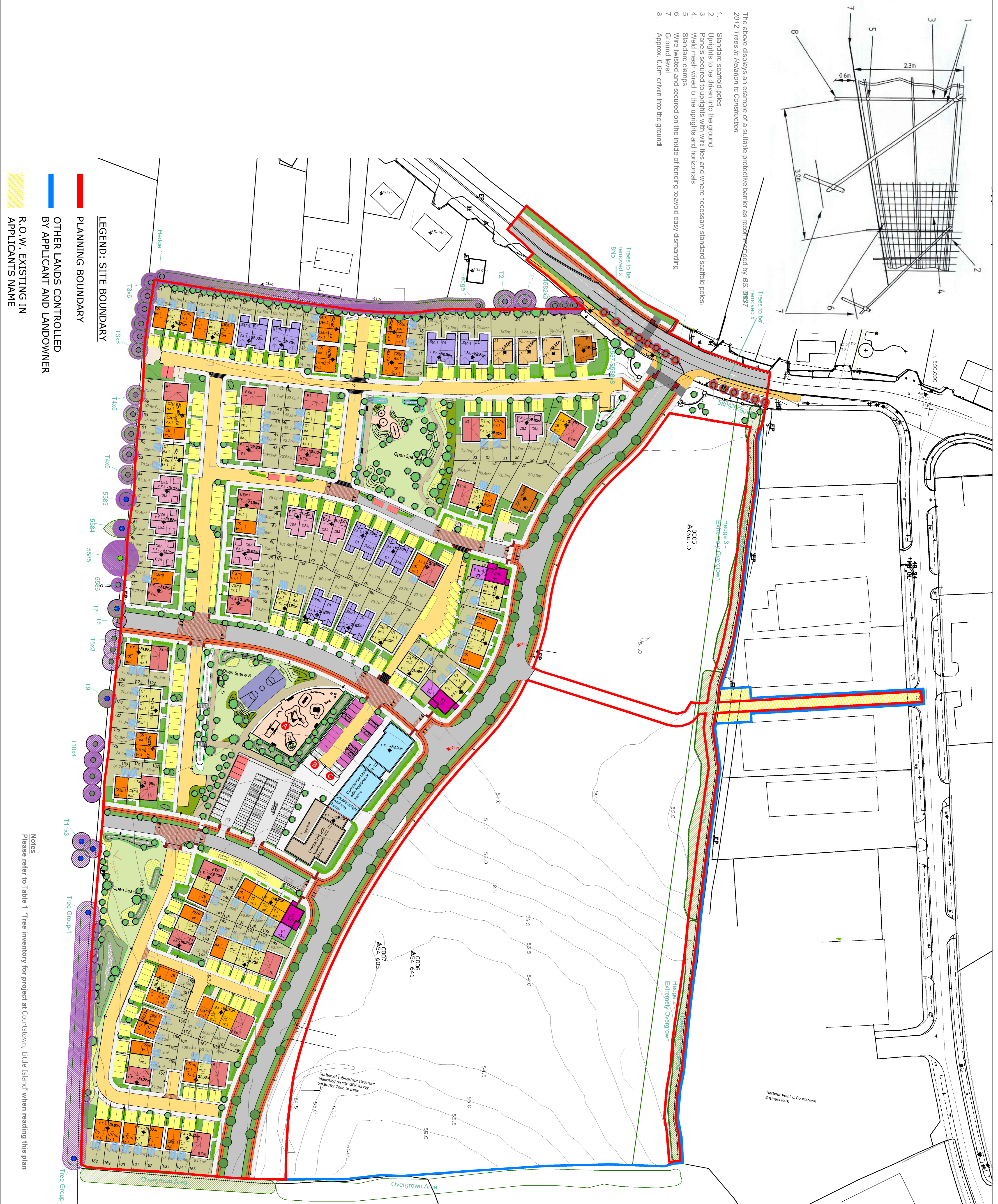


- The above displays an example of a suitable protective barrier as recommended by BS 5837
2012 *Trees in Relation to Construction*
1. Standard scaffold poles
 2. Uprights to be driven into the ground
 3. Panels secured to uprights with wire ties and where necessary standard scaffold poles.
 4. Weld mesh wired to the uprights and horizontals
 5. Standard clamps
 6. Wire twisted and secured on the inside of fencing to avoid easy dismantling
 7. Ground level
 8. Approx. 0.6m driven into the ground



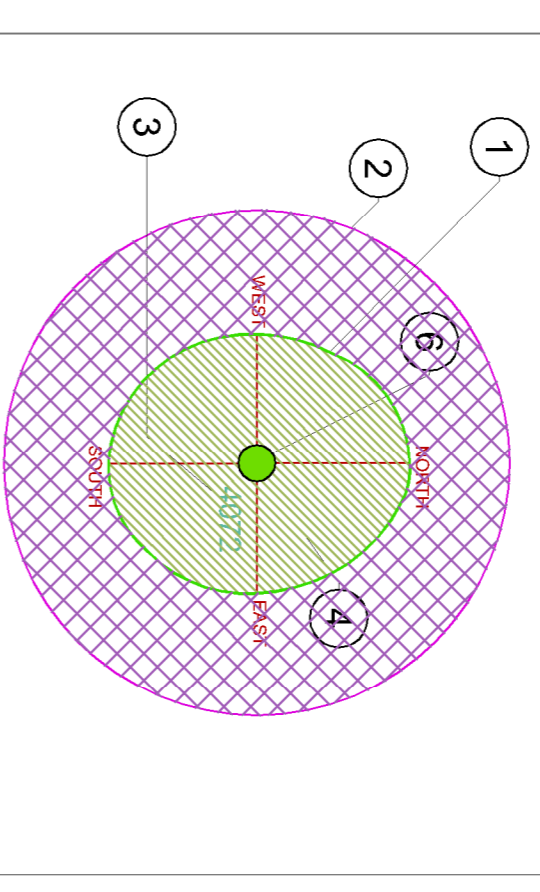
LEGEND: SITE BOUNDARY
PLANNING BOUNDARY
OTHER LANDS CONTROLLED BY APPLICANT AND LANDOWNER
R.O.W. EXISTING IN APPLICANTS NAME

Notes
 Please refer to Table 1 'Tree Inventory for project at Courstown, Little Island' when reading this plan

Rev.	Date	Description

Legend:

- Category (A, A1, A2, A3) - Those of high quality and value, in such a condition as to be able to make a significant contribution (a minimum of 40 years)
- Category (C, C1, C2, C3) - Those of low quality and value, currently in adequate condition to retain until new planting could be established (a minimum of 10 years for trees with a stem diameter below 150mm)
- Category (B, B1, B2, B3) - Those of moderate quality and value, in such a condition as to be able to make a significant contribution (a minimum of 20 years)
- Category (U) - Those of such condition that they are unlikely to contribute to the current context, yet should be retained for future consideration



- AGE GROUPINGS**
- Y = YOUNG
 - MA = MIDDLE AGE
 - M = MATURE
 - OM = OVERMATURE
 - V = VETERAN

1. EXISTING TREE CANOPY BASED ON DIMENSIONS GATHERED ON SITE IN 4 DIRECTIONS, NORTH, SOUTH, EAST AND WEST
 2. ROOT PROTECTION ZONE BASED ON 12 TIMES THE (DBH) AT CHEST HEIGHT
 3. TREE TAG NUMBER
 4. TREE TO BE RETAINED
 5. TREE TO BE REMOVED
 6. TREE CATEGORY BASED ON BS5837 2012 CRITERIA
 7. DECIDUOUS TREE CANOPY
 8. EVERGREEN TREE CANOPY
- 01 TABLES BS 5837-2012**

Client: Ruden Homes

Project: Tree Survey for the proposed development at Courstown, Little Island

Drawing Title: Tree Protection Plan - Ruden Homes, Courstown, Little Island

Drawn By: RS

Checked By: MCG

Date: 06/08/2020

Scale: 1:750 @ A1

Dwg. No.: RH-15-002

Rev. No.: 01

Issued From: Information

Unit 1a: Ark R.C. Clarke
 Ark R.C. Clarke
 14 Ballsbridge Park
 Ballsbridge Park
 Dublin 4
 Ireland
 Phone: +353 (0)1 49032808
 Fax: +353 (0)1 4903211
 Email: info@arkrc.co.uk
 Web: www.arkrc.co.uk

Department of Planning & Construction