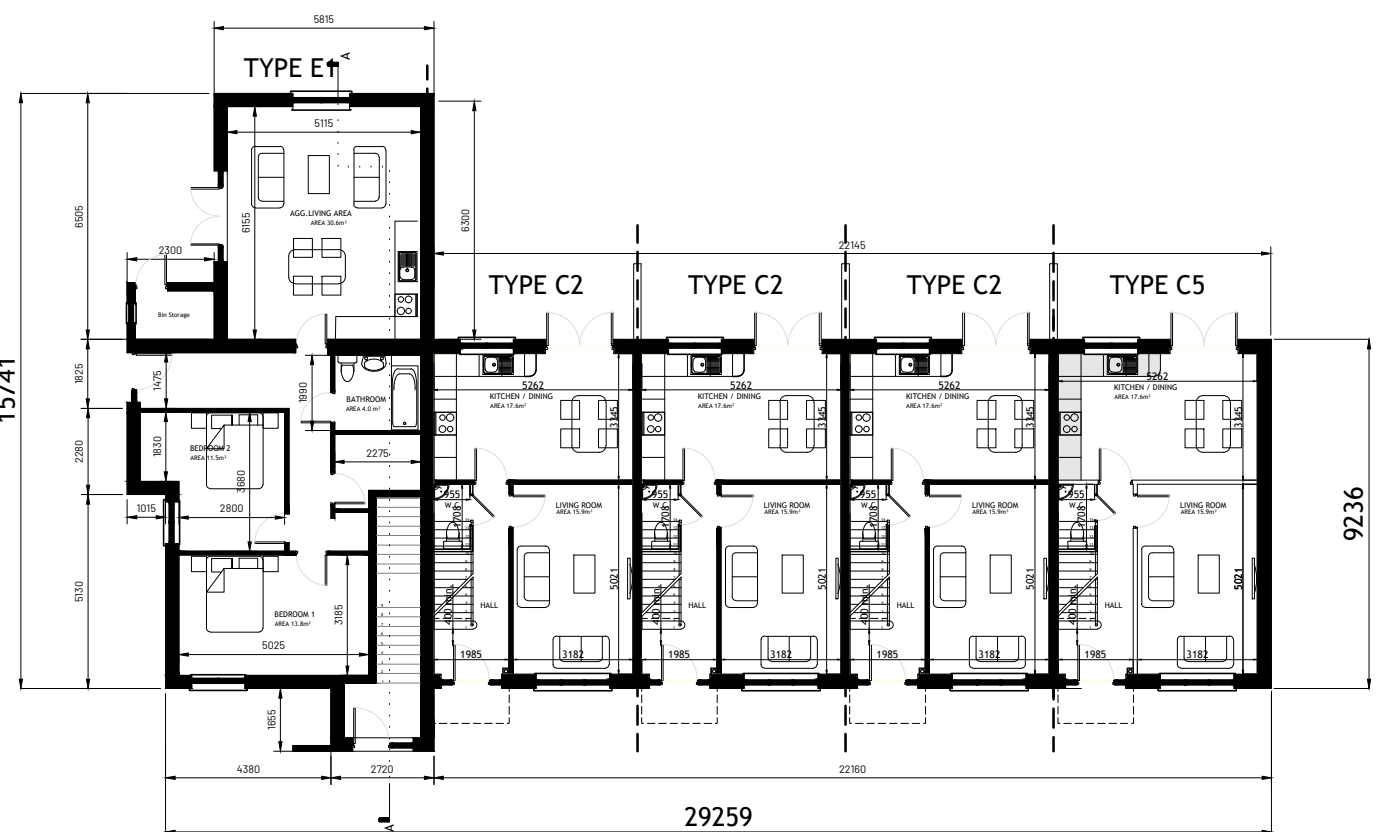


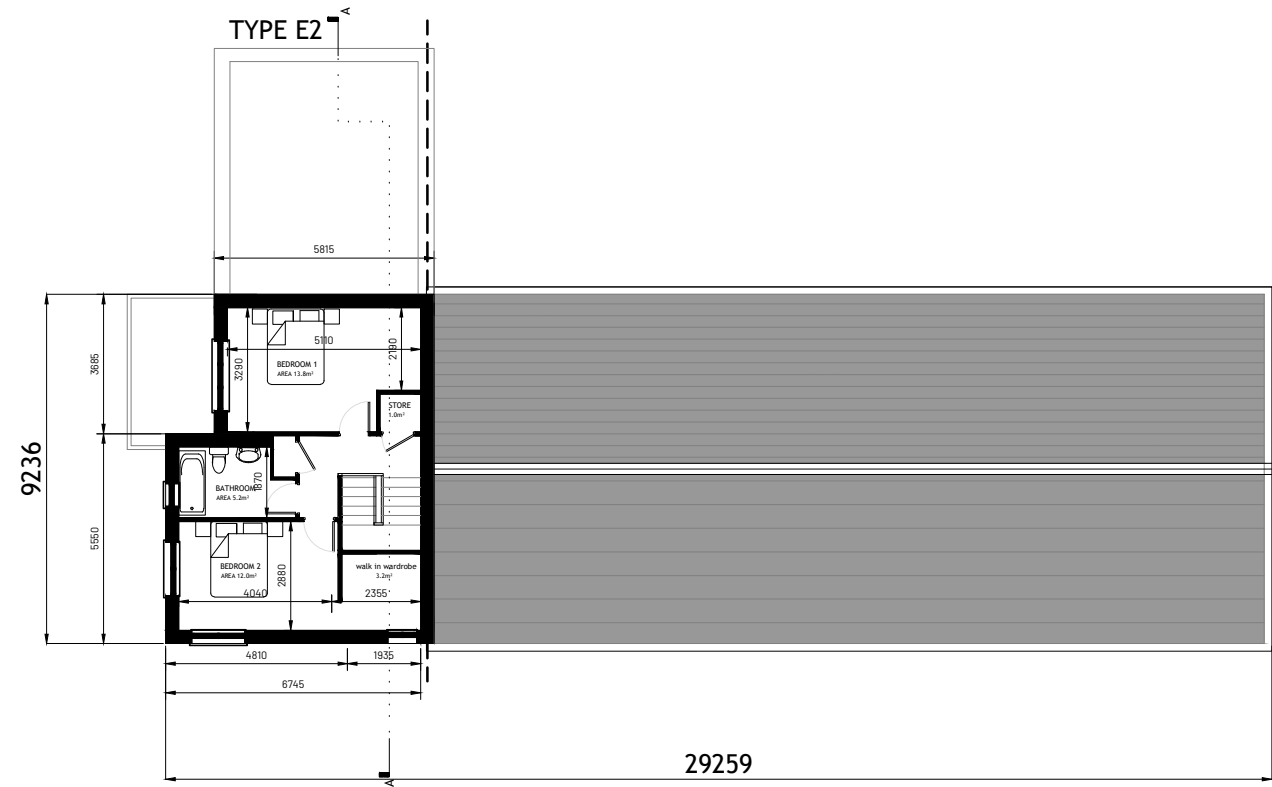
Figured dimensions only are to be used. All dimensions to be checked onsite. Differences between drawings and between drawings and specification or bills of quantities to be reported to Engenuiti Consulting Engineers

© The copyright of the drawings and designs contained therein remains vested in the Blupan Limited t/a Engenuiti Consulting Engineers

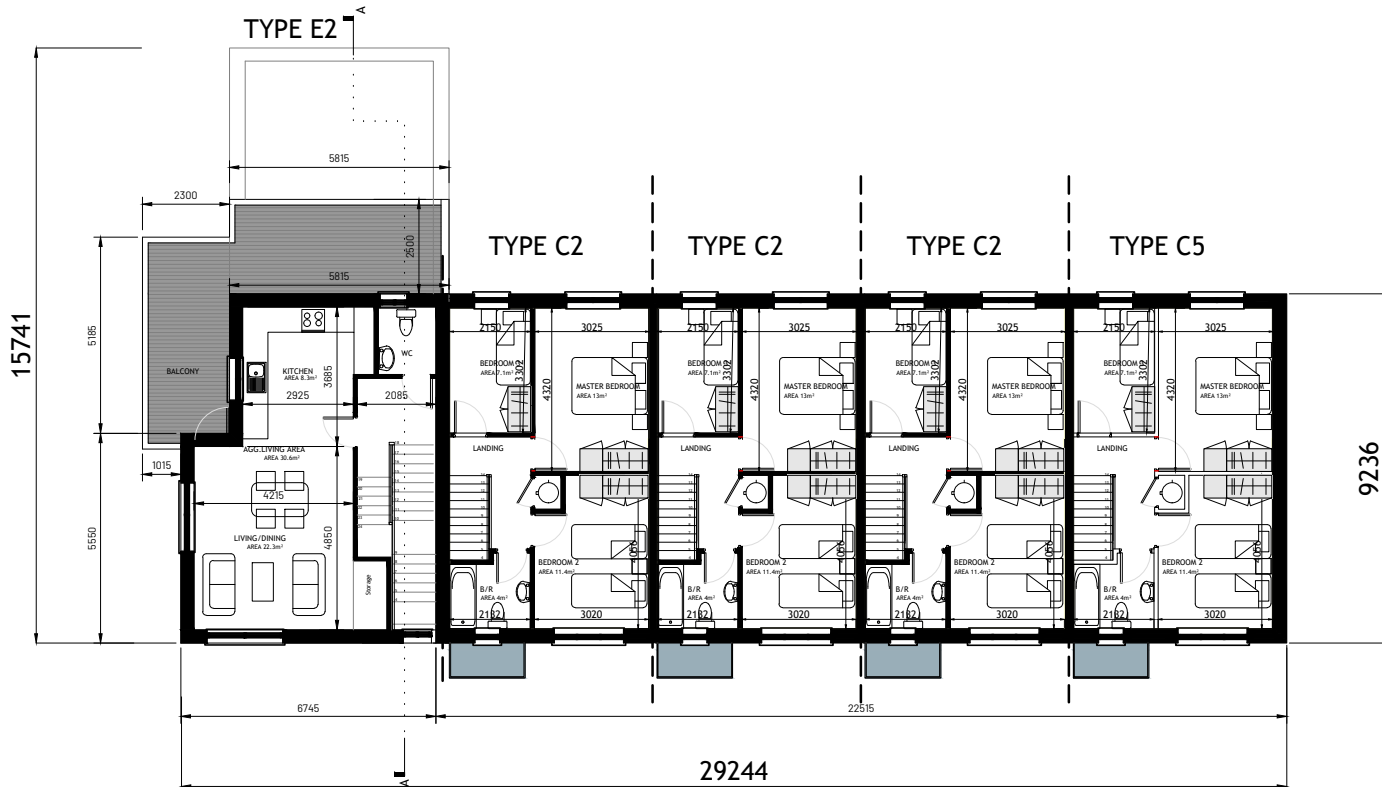
E1 | E2 | C2 | C2 | C2 | C2 | C5 CHARACTER AREA 3



GROUND FLOOR PLAN
SCALE 1:200



SECOND FLOOR PLAN
SCALE 1:200



FIRST FLOOR PLAN
SCALE 1:200



KEY - PLAN

DUPLEX TYPE E1
2-BED
1 STOREY

APPROXIMATE AREAS-
GROUND FLOOR - C.80.63M²

TOTAL AREA CIRCA 80.63M²
(C.867.89 SQ.FT)

DUPLEX TYPE E2
2-BED
2 STOREY

APPROXIMATE AREAS-
FIRST FLOOR - C.41.32M²
SECOND FLOOR - 43.58 M²
BALCONY - 24M²

TOTAL AREA CIRCA 108.90 M²
(C.1172.19 SQ.FT)

HOUSETYPE C2
3-BED
2 STOREY

APPROXIMATE AREAS-
GROUND FLOOR - C.45 M²
FIRST FLOOR - C.45 M²

TOTAL AREA CIRCA 90 M²
(C.969 SQ.FT)

HOUSETYPE C5
3-BED
2 STOREY

APPROXIMATE AREAS-
GROUND FLOOR - C.45 M²
FIRST FLOOR - C.45 M²

TOTAL AREA CIRCA 90 M²
(C.969 SQ.FT)

- NOTES:
- FOR INDIVIDUAL UNIT FLOOR LEVELS PLEASE REFER TO SITE LAYOUT MAP
 - FOR INDIVIDUAL UNIT NORTH POINT ORIENTATION PLEASE REFER TO SITE LAYOUT MAP
 - APPLIED BRICK FINISH IS DEPENDENT ON AVAILABILITY AND SITE LOCATION
 - ALL DIMENSIONS ARE IN mm
 - PLANNING DRAWING ONLY
 - DO NOT SCALE FROM DRAWINGS

Rev.	Date	Amendment Details	Drawn	Chk'd	App'd
A	17.05.24	ISSUED FOR PLANNING	EOS	DOS	DOS



Address: Unit 3, Westpoint Business Centre, Ballincollig, Cork P32 YK52
Telephone: 021-242 7257 Email: info@engenuiti.ie Website: www.engenuiti.ie

Client:
RUDEN HOMES LTD
Architecture
Planning
Urban Design
Engineering
Landscape
Interiors

Project:
RESIDENTIAL DEVELOPMENT
COURTSTOWN, LITTLE ISLAND
Co.CORK

Drawing Title:
BLOCK E1 | E2 | C2 | C2 | C2 | C5
CHARACTER AREA 3
PLANS

Scale @ A3: 1:200
Drawn: EOS
Approved: DOS
Date: 17.05.24

Job No: 10277
Drawing No: 10277-PL-272
Rev: A

Issue Status:
Information Preliminary Approval
Construction Tender Planning