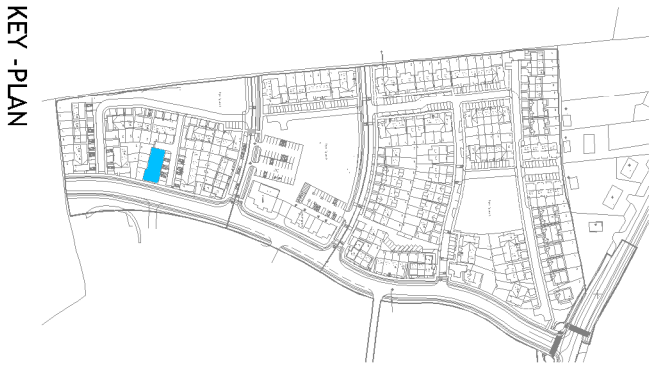
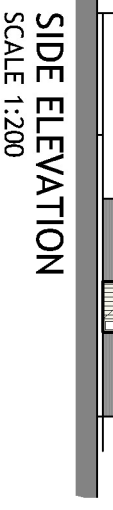
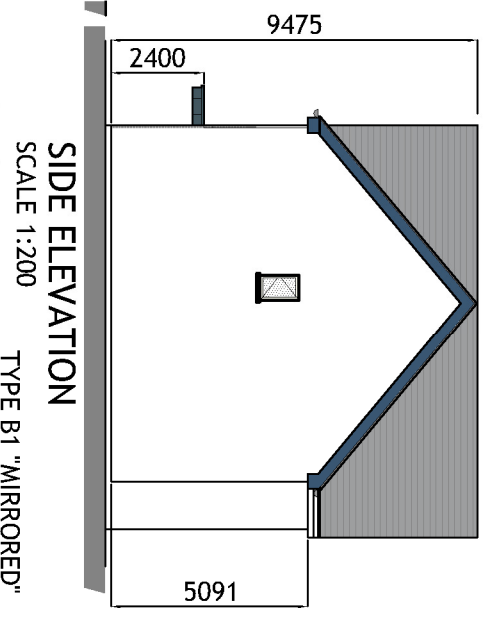
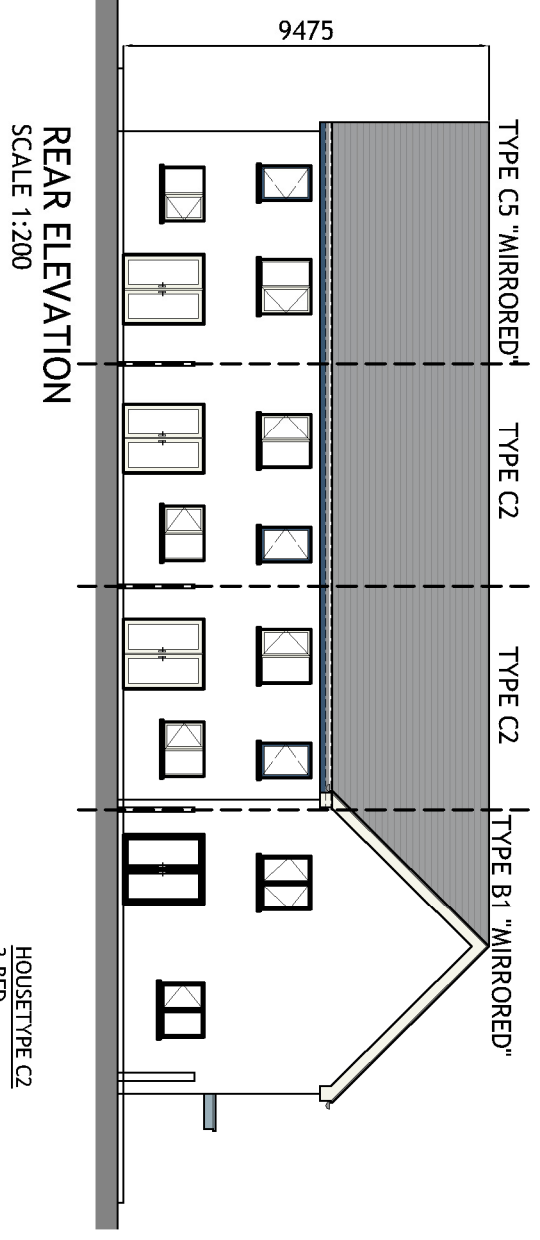
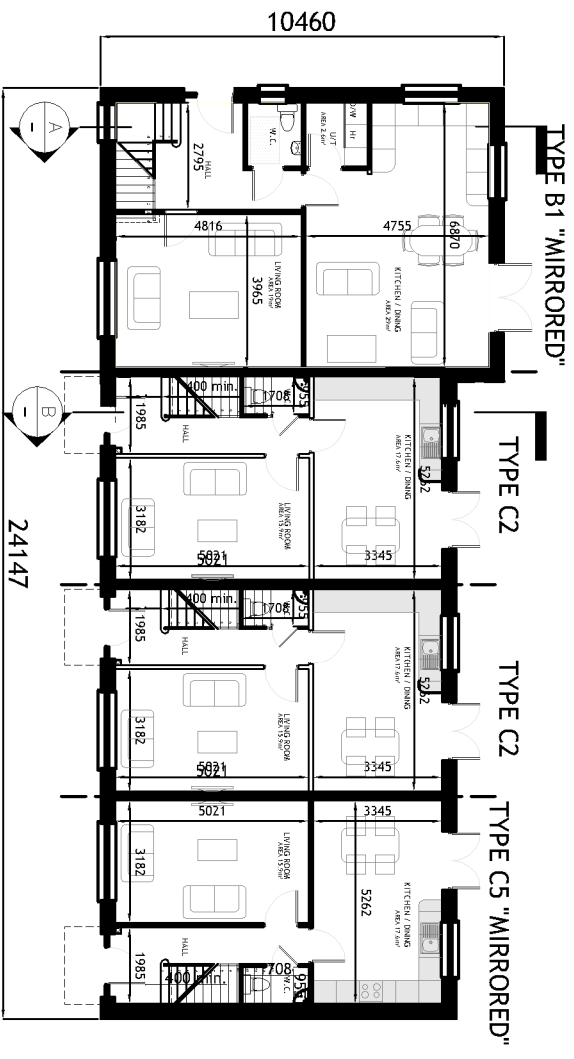
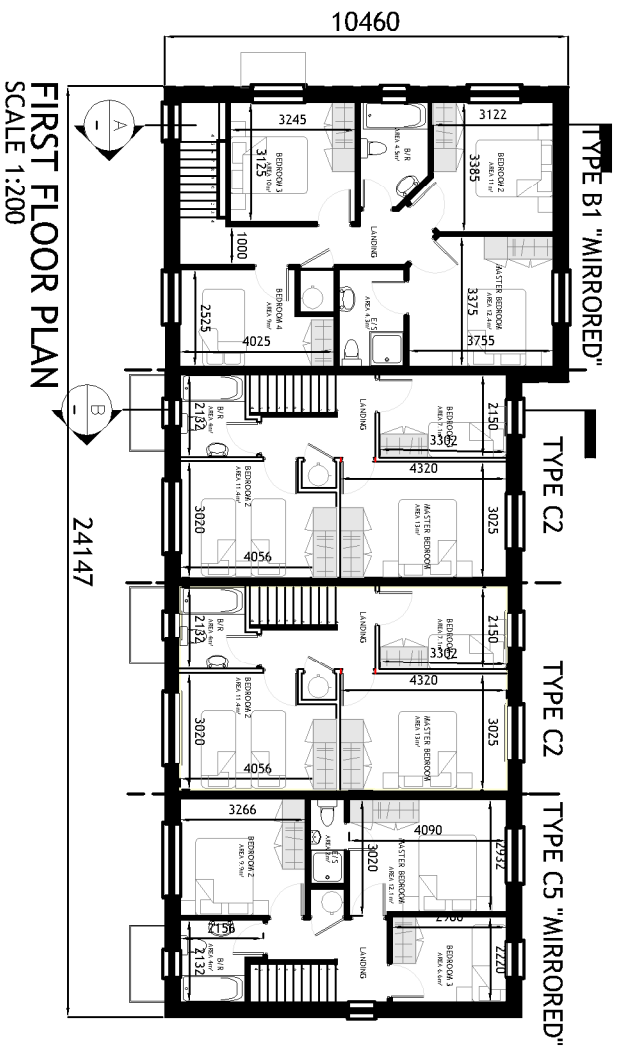
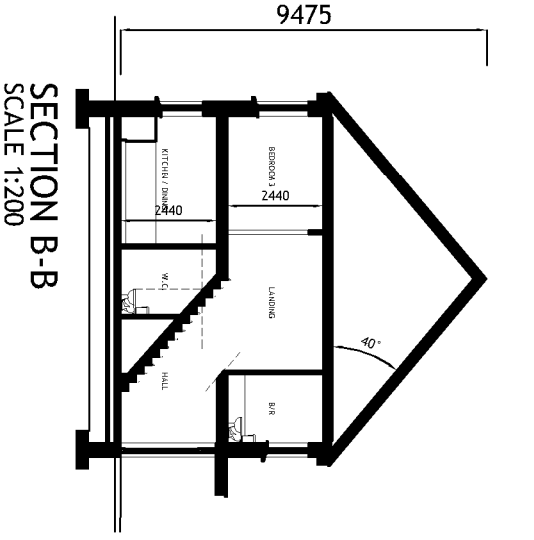
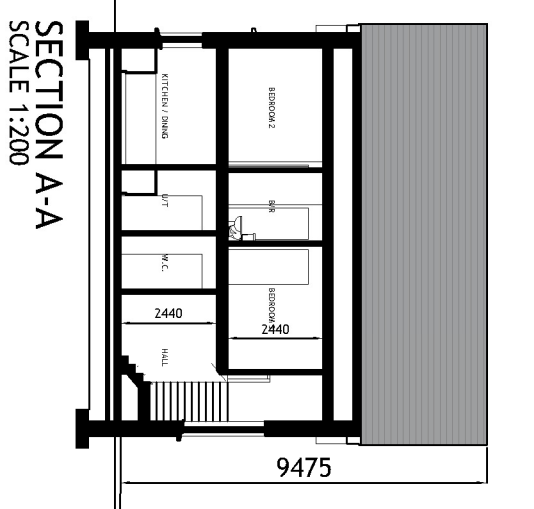
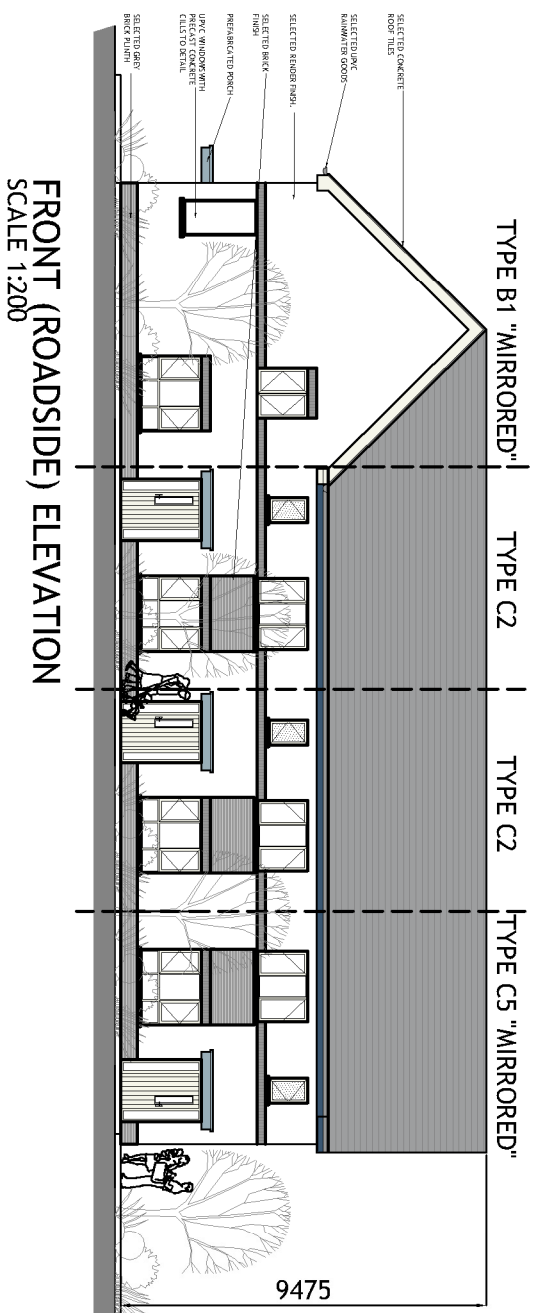


B1 | C2 | C2 | C5 CHARACTER AREA 3



HOUSETYPE C2
3-BED
2 STOREY

APPROXIMATE AREAS-
GROUND FLOOR - C.45 M²
FIRST FLOOR - C.45 M²
TOTAL AREA CIRCA 90 M²
(C.969 SQ.FT)

HOUSETYPE B1
3-BED
2 STOREY

APPROXIMATE AREAS-
GROUND FLOOR - C.45 M²
FIRST FLOOR - C.45 M²
TOTAL AREA CIRCA 90 M²
(C.969 SQ.FT)

- NOTES:
- FOR INDIVIDUAL UNIT FLOOR LEVELS PLEASE REFER TO SITE LAYOUT MAP
 - FOR INDIVIDUAL UNIT NORTH POINT ORIENTATION PLEASE REFER TO SITE LAYOUT MAP
 - APPLIED BRICK FINISH IS DEPENDENT ON AVAILABILITY AND SITE LOCATION
 - ALL DIMENSIONS ARE IN MM
 - PLANNING DRAWING ONLY
 - DO NOT SCALE FROM DRAWINGS

Rev.	Date	Amendment Details	Drawn	Chkd	App'd
A	15.05.24	ISSUED FOR PLANNING	EOS	DOS	DOS



Address: Unit 3, Warrington Business Centre, Littlemore, Chester, CH2 2YQ
Telephone: 071 242 7257 Email: info@engenuiti.co.uk Website: www.engenuiti.co.uk

Client:
RUDEN HOMES LTD

Project:
RESIDENTIAL DEVELOPMENT
COURTSTOWN, LITTLE ISLAND
CO. CORK

Drawing Title:
BLOCK B1 | C2 | C2 | C5
CHARACTER AREA 3
PLANS | ELEVATIONS | SECTION

Scale @ A3: 1:100/200
Date: 15.05.24

Drawn: EOS
Approved: DOS

Issue Status:
 Information
 Preliminary
 Approval
 Tender
 Planning
 Construction

Issue No.	Date	Rev.
102277	10/27/24	A

Figured dimensions only, are to be used. All dimensions to be checked on site. Differences between drawings and between drawings and specification or bills of quantities to be reported to Engenuiti Consulting Engineers.
The copyright of the drawings and designs contained therein remains vested in the Ruden Homes Limited /a Engenuiti Consulting Engineers