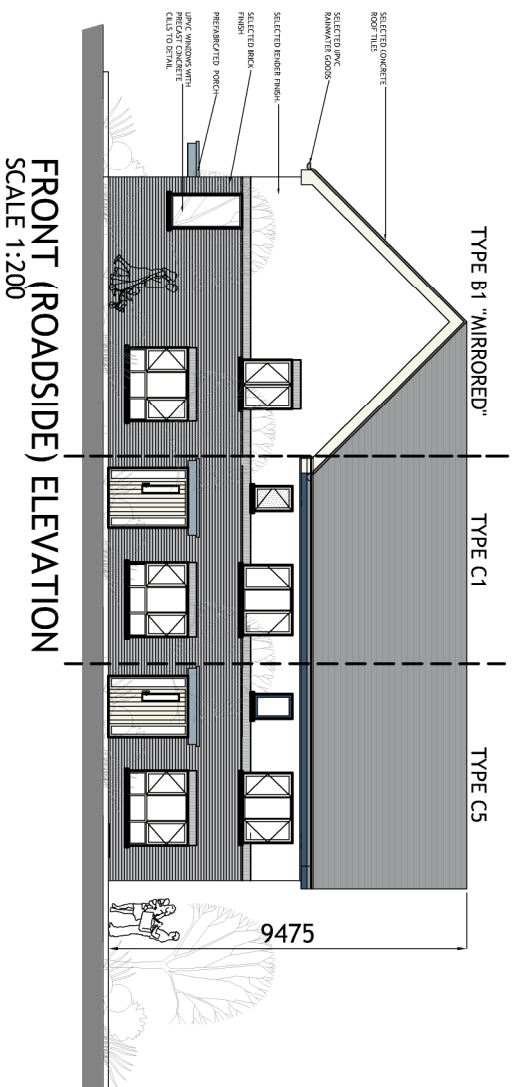
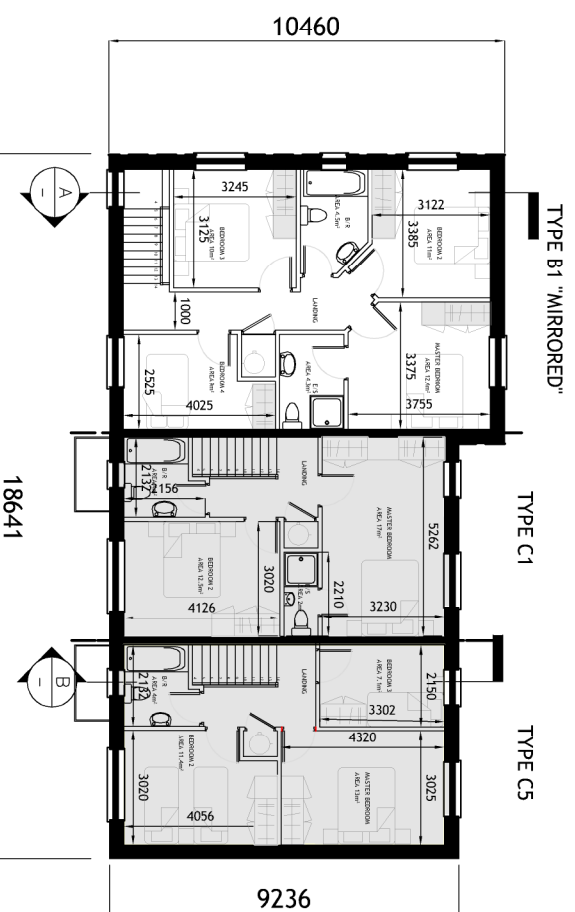


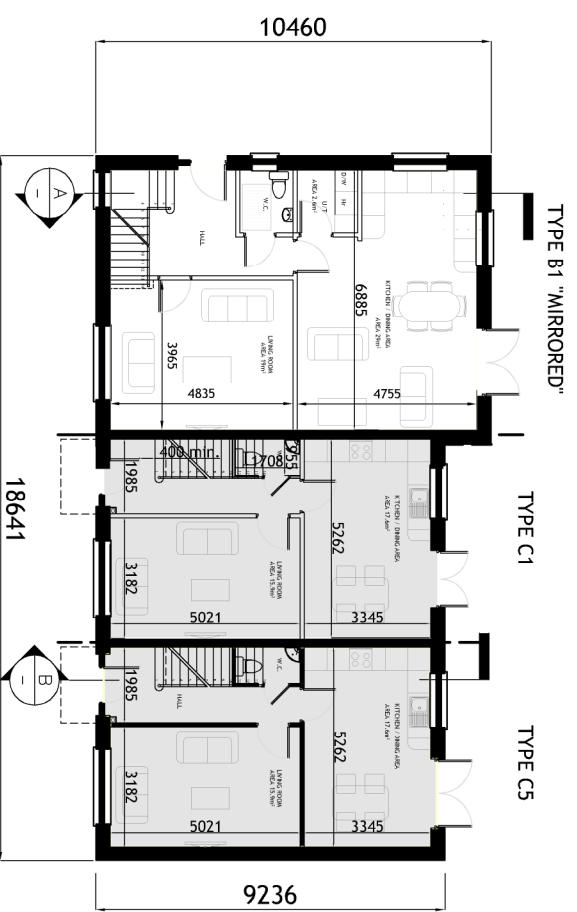
# B1 | C1 | C5 CHARACTER AREA 2



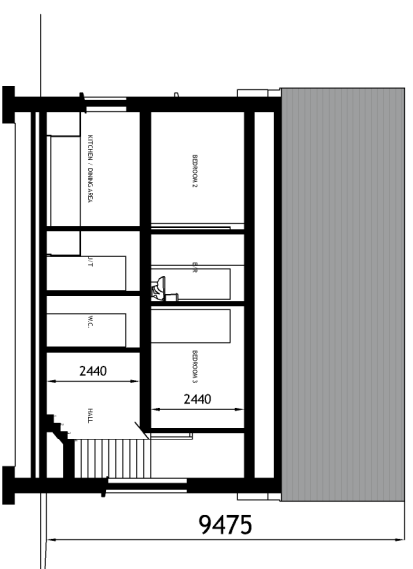
FRONT (ROADSIDE) ELEVATION  
SCALE 1:200



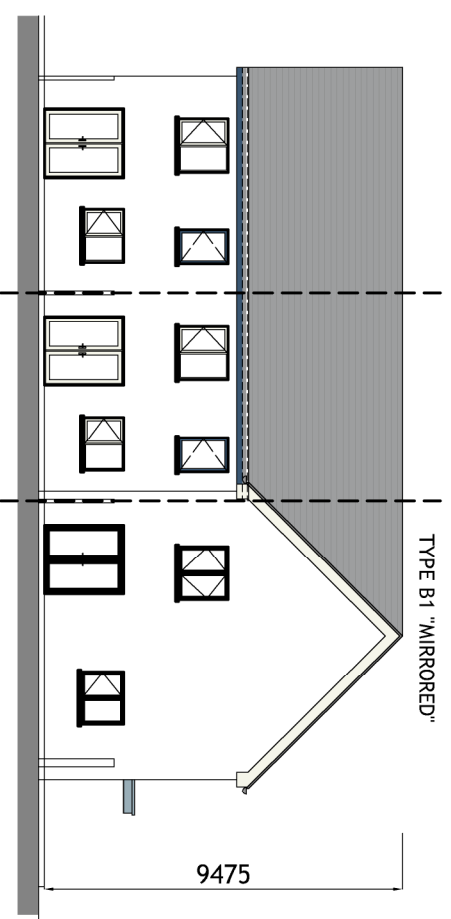
FIRST FLOOR PLAN  
SCALE 1:200



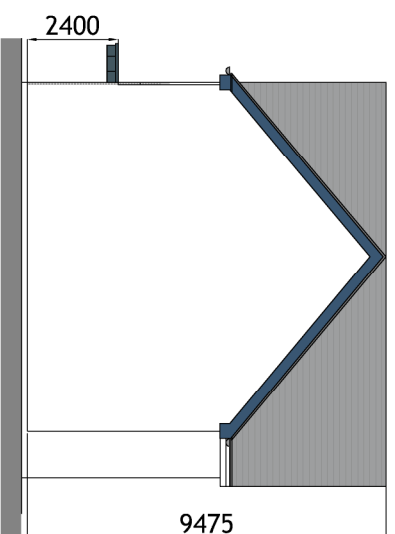
GROUND FLOOR PLAN  
SCALE 1:200



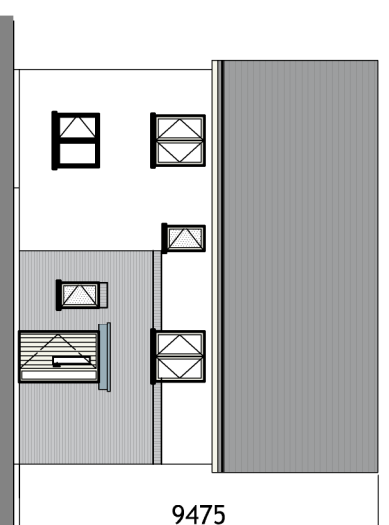
SECTION A-A  
SCALE 1:200



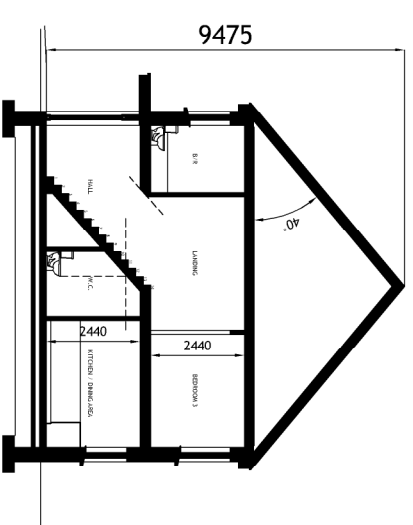
REAR ELEVATION  
SCALE 1:200



SIDE ELEVATION  
SCALE 1:200



SIDE ELEVATION  
SCALE 1:200



SECTION B-B  
SCALE 1:200

HOUSETYPE C1  
2-BED  
2 STOREY  
APPROXIMATE AREAS-  
GROUND FLOOR C.45 M<sup>2</sup>  
FIRST FLOOR C.45 M<sup>2</sup>  
TOTAL AREA CIRCA 90 M<sup>2</sup>  
(C.969 SQ.FT)

HOUSETYPE B1  
4 BED  
2 STOREY  
END OF TERRACE / SEMI-DETACHED  
APPROXIMATE AREAS  
GROUND FLOOR C.71.5 M<sup>2</sup>  
FIRST FLOOR C.66.5 M<sup>2</sup>  
TOTAL AREA C.138 M<sup>2</sup>  
(C.1485 SQ.FT)

HOUSETYPE C5  
3-BED  
2 STOREY  
APPROXIMATE AREAS-  
GROUND FLOOR -C.45 M<sup>2</sup>  
FIRST FLOOR -C.45 M<sup>2</sup>  
TOTAL AREA CIRCA 90 M<sup>2</sup>  
(C.969 SQ.FT)

Rev	Date	Description	Drawn	Chkd	Appd
B	31.03.23	ISSUED FOR PLANNING	EOS	DOS	DOS
A	04.04.22	ISSUED FOR PLANNING	EOS	DOS	DOS
		Amendment Details	Drawn	Chkd	Appd



Address: Unit 13, Westport Business Centre Building, Galway, Ireland  
Telephone: 017-242-7277 Email: info@engenuiti.ie Website: www.engenuiti.ie

Client: RUDEN HOMES LTD  
Architecture  
Planning  
Urban Design

Project: RESIDENTIAL DEVELOPMENT  
COURTSTOWN, LITTLE ISLAND  
CO. DUBLIN  
Engineering  
Landscape  
Interiors

Drawing Title:  
BLOCK B1 | C1 | C5  
CHARACTER AREA 2  
PLANS | ELEVATIONS | SECTION

Scale @ AS:	Drawn:	Approved:	Date:
1:100/200	EOS	DOS	01.03.22
Job No:	10277	Drawing No:	10277-PL-243
Issue Status:	Information	Preliminary	Approval
	Construction	Tender	Planning

Figured dimensions only are to be used. All dimensions to be checked onsite. Differences between drawings and between drawings and specification or bills of quantities to be reported to Engenuiti Consulting Engineers. The copyright of the drawings and designs contained therein remains vested in the Ruden Homes Limited by Engenuiti Consulting Engineers.