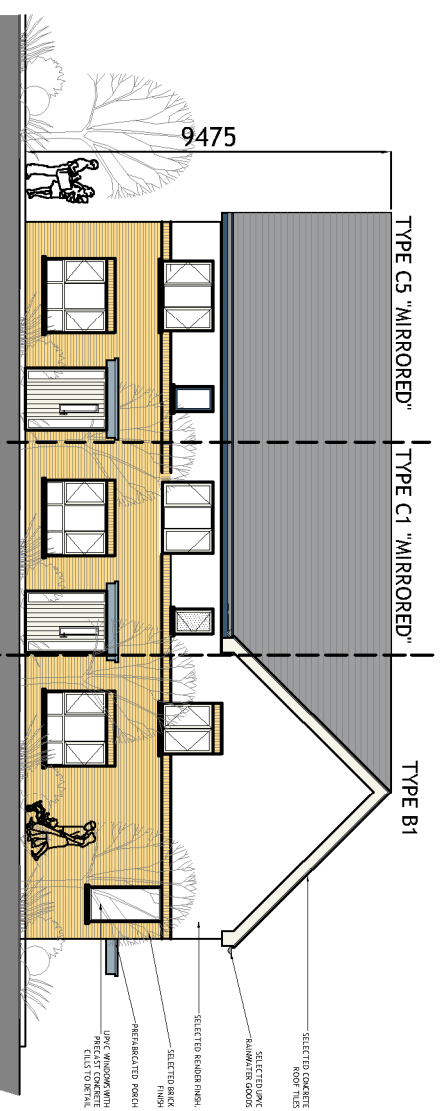
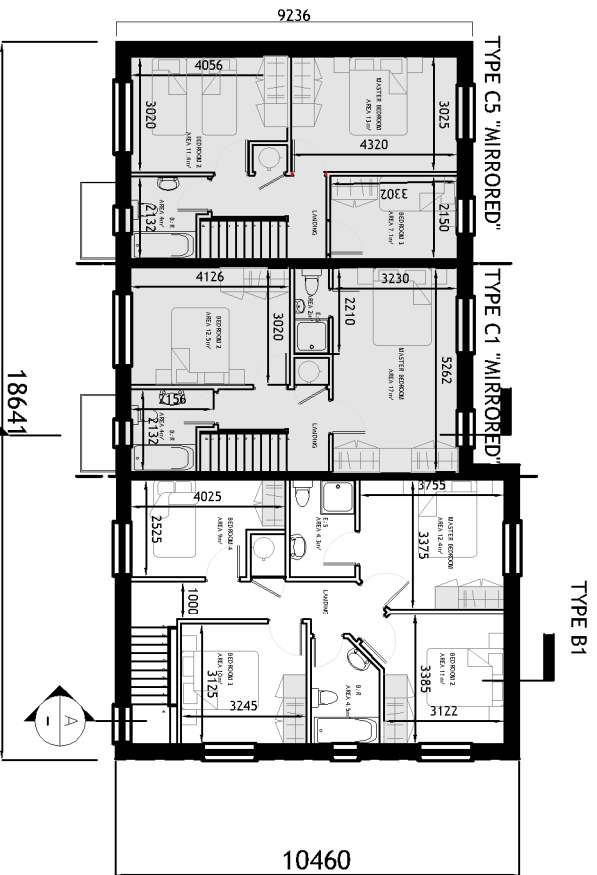


B1 | C1 | C5 CHARACTER AREA 1

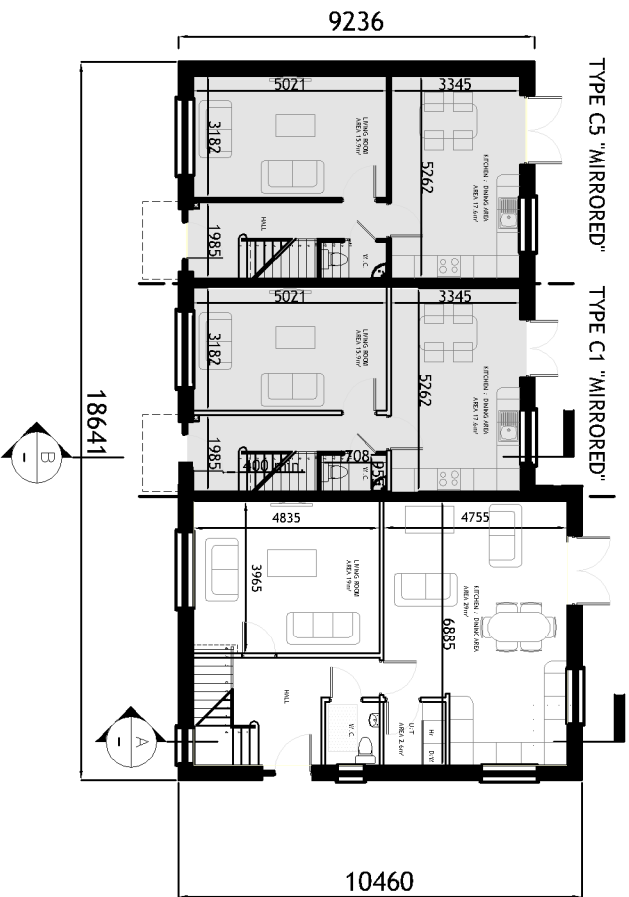
FRONT (ROADSIDE) ELEVATION
SCALE 1:200



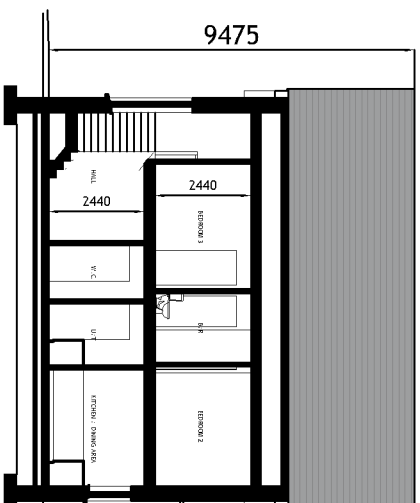
FIRST FLOOR PLAN
SCALE 1:200



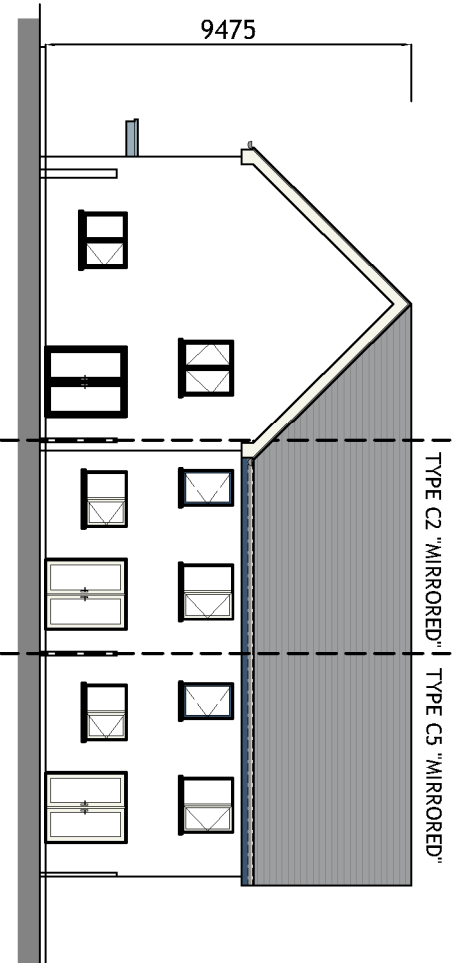
GROUND FLOOR PLAN
SCALE 1:200



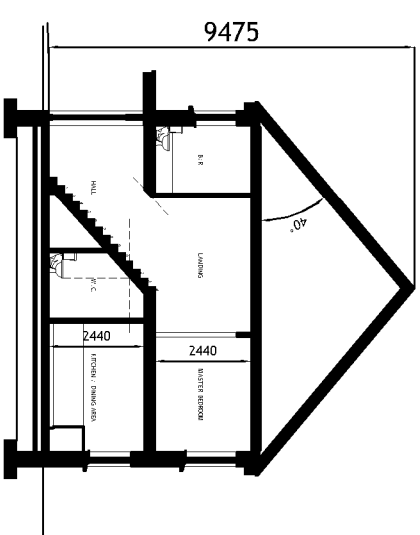
SECTION A-A
SCALE 1:200



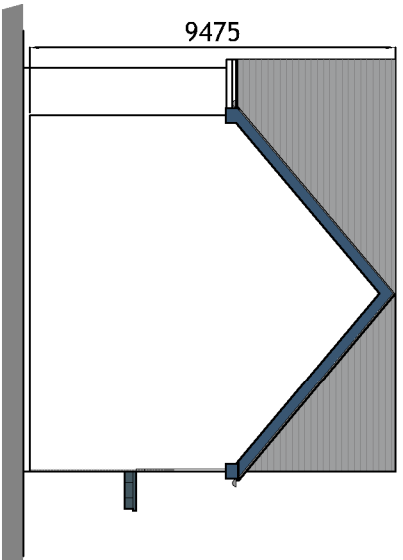
REAR ELEVATION
SCALE 1:200



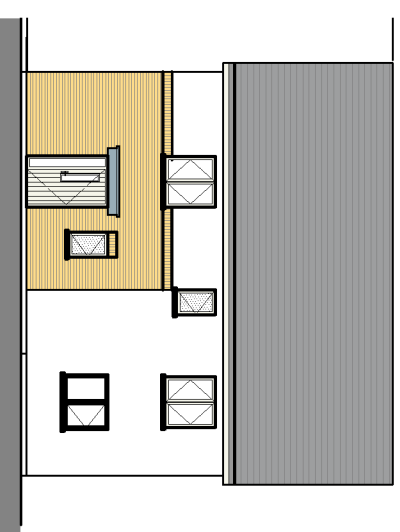
SECTION B-B
SCALE 1:200



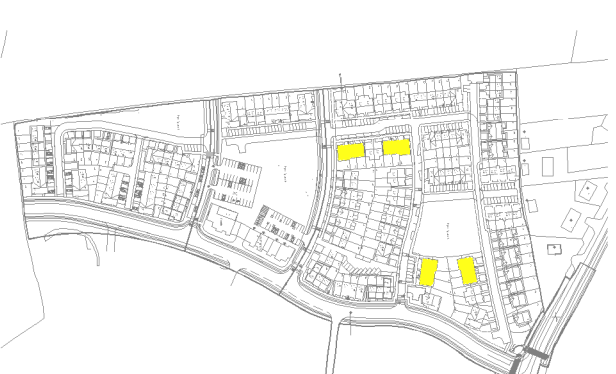
SIDE ELEVATION
SCALE 1:200



SIDE ELEVATION
SCALE 1:200



KEY - PLAN



NOTES:

- FOR INDIVIDUAL UNIT FLOOR LEVELS PLEASE REFER TO SITE LAYOUT MAP
- FOR INDIVIDUAL UNIT NORTH POINT ORIENTATION PLEASE REFER TO SITE LAYOUT MAP
- APPLIED BRICK FINISH IS DEPENDENT ON AVAILABILITY AND SITE LOCATION
- ALL DIMENSIONS ARE IN MM
- PLANNING DRAWING ONLY
- DO NOT SCALE FROM DRAWINGS

HOUSETYPE C2
2-BED
2 STOREY
APPROXIMATE AREAS-
GROUND FLOOR C.45 M²
FIRST FLOOR C.45 M²
TOTAL AREA CIRCA 90 M²
(C.969 SQ.FT)

HOUSETYPE B1
4-BED
2 STOREY
END OF TERRACE / SEMI-DETACHED
APPROXIMATE AREAS
GROUND FLOOR C.71.5 M²
FIRST FLOOR C.66.5 M²
TOTAL AREA (C.1485 SQ.FT)
HOUSETYPE C1& C5
2 83-BED
2 STOREY
APPROXIMATE AREAS-
GROUND FLOOR - C.45 M²
FIRST FLOOR - C.45 M²
TOTAL AREA CIRCA 90 M²
(C.969 SQ.FT)

Rev.	Date	Amendment Details	Drawn	Chkd	App'd
B	31.03.23	ISSUED FOR PLANNING	EOS	DOS	DOS
A	04.04.22	ISSUED FOR PLANNING	EOS	DOS	DOS



Address: Unit 3, Walsport Business Centre, Littleport, Cambridgeshire, Cambridgeshire, UK
Telephone: 01223 252757 Email: info@engenuiti.co.uk Website: www.engenuiti.co.uk

Client: RUDEN HOMES LTD

Project: RESIDENTIAL DEVELOPMENT
COURTSTOWN, LITTLE ISLAND
CO. CO. DUBLIN

Drawing Title: BLOCK B1 | C1 | C5
CHARACTER AREA 1
PLANS | ELEVATIONS | SECTION

Scale @ A3:	Drawn:	Approved:	Date:
1:100/200	EOS	DOS	01.03.22

Issue Status:	Information	Construction
<input type="checkbox"/> Preliminary	<input type="checkbox"/> Approval	<input checked="" type="checkbox"/> Tender

Figured dimensions only are to be used. All dimensions to be checked onsite. Differences between drawings and between drawings and specification or bills of quantities to be reported to Engenuiti Consulting Engineers. The copyright of the drawings and designs contained therein remains vested in the Ruden Homes Limited via Engenuiti Consulting Engineers.